

Monospecific rabbit clonal antibodies
for clinical diagnostics and research



PRODUCT CATALOG

DB BIOTECH

CONTENT

Company profile	3
Proteomic services	4

ANTIBODIES FOR IHC-P APPLICATION

5 - 32

Anti - Actin (DB001) • Anti - iNOS (DB003)	5
Anti - p53 (DB026) • Anti - CD5 (DB027)	6
Anti - CD10 (DB030) • Anti - Human Kappa light chain (DB037)	7
Anti - Human Kappa light chain (DB038) • Anti - Human Lamda light chain (DB039)	8
Anti - CD20 (DB041) • Anti - CD45 (DB042)	9
Anti - CD205 (RCC, DEC 205) (DB043) • Anti - CD205 (RCC, DEC 205) (DB044)	10
Anti - CD163 (DB045) • Anti - PLAP (Placental Alkaline Phosphatase) (DB047)	11
Anti - CD227 (Mucin-1, EMA) (DB048) • Anti - Melanosome (DB049)	12
Anti - Melan A (DB050) • Anti - Cytokeratin 7 (DB051)	13
Anti - ER (Estrogen receptor) (DB053) • Anti - S-100 (DB055)	14
Anti - CD10 (DB057) • Anti - PR (Progesterone receptor) (DB059)	15
Anti - EBV/LMP-1 (DB060) • Anti - EBV/LMP-1 (DB061)	16
Anti - CD117 (DB062) • Anti - Bcl-2 (DB064)	17
Anti - Cyclin D1 (DB066) • Anti - Ki-67 (DB070)	18
Anti - CD1a (DB071) • Anti - CD3 (DB082)	19
Anti - CD8 (DB085) • Anti - TTF-1 (DB089)	20
Anti - TTF-1 (DB090) • Anti - EGFR (DB092)	21
Anti - Cerb-2 (Her-2/neu) (DB094) • Anti - Cytokeratin 8 (DB098)	22
Anti - Cytokeratin 14 (DB099) • Anti - Cytokeratin 16 (DB100)	23
Anti - Cytokeratin 17 (DB101) • Anti - Cytokeratin 18 (DB102)	24
Anti - Cytokeratin 19 (DB103) • Anti - C3d complement (DB106)	25
Anti - C4d complement (DB107) • Anti - PR (Progesterone receptor) (DB108)	26
Anti - PR (Progesterone receptor) (DB109) • Anti - Ki-67 (DB111)	27
Anti - CD7 (DB114) • Anti - Cytokeratin 20 (DB119)	28
Anti - p63 (DB134)	29
Anti - p16 (DB152)	30
Anti - Synaptophysin (DB156)	31
Anti - Chromogranin A (DB157) • Anti - Chromogranin A (DB158)	32

DETECTION SYSTEM

33

ANTIBODIES FOR WB APPLICATION

34 - 47

Anti - Actin (DB001) • Anti - p53 (DB002)	34
Anti - iNOS (DB003) • Anti - Interferon- γ (DB004)	35
Anti - PKC- α (DB005) • Anti - PKC- β I (DB006)	36
Anti - PKC- β II (DB007) • Anti - PKC- γ (DB008)	37
Anti - PKC- δ (DB009) • Anti - PKC- ϵ (DB010)	38
Anti - PKC- ζ (DB011) • Anti - Erk 1,2 (DB012)	39
Anti - Phospho-Erk 1,2 (DB013)	40
Anti - Metallothionein (DB014) • Anti - Neph rin (DB017)	41
Anti - CTRP5 (DB018) • Anti - CTRP7 (DB019)	42
Anti - Trypsin (DB022) • Anti - Trypsin (DB023)	43
Anti - Neph rin (DB024) • Anti - Prion (DB033)	44
Anti - Prion (DB080)	45
Anti - Prion (DB081) • Anti - BAX (DB123)	46
Anti - Bcl-2 (D0132)	47

ANTIBODIES FOR FC APPLICATION

48 - 55

Anti - PKC- α FITC (DB1001) • Anti - PKC- β I FITC (DB1002)	48
Anti - PKC- β II FITC (DB1003) • Anti - PKC- γ FITC (DB1004)	49
Anti - PKC- δ FITC (DB1005) • Anti - PKC- ϵ FITC (DB1006)	50
Anti - PKC- ζ FITC (DB1007) • Anti - BAX FITC (DB1010)	51
Anti - Bcl-2 FITC (DB1011) • Anti - p53 FITC (DB1012)	52
Anti - Actin FITC (DB1013) • Anti - Cyclin D1 FITC (DB1014)	53
Anti - Estrogen Receptor FITC (DB1015) • Anti - CD5 FITC (DB1017)	54
Anti - CD10 FITC (DB1018) • Anti - FITC Rabbit IgG (DB1000)	55

Company profile

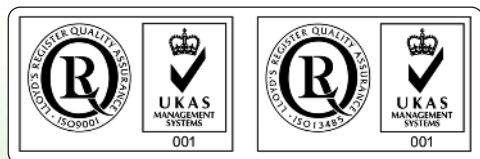
DB Biotech is focused on the design and production of high quality **rabbit clonal antibodies** developed by a novel and proprietary „**in vitro cloning technology**“ which has been developed and perfected by the DB Biotech scientific team over a period of 7 years. DB Biotech monospecific clonal antibodies are uniquely characterized by exceptional specificity, affinity and avidity.



The DB Biotech in-vitro cloning technology enables the preparation of a pure immunoglobulin fraction corresponding to a single clone of B lymphocytes. The obtained immunoglobulin recognizes only one single linear epitope on the antigen molecule, making a DB Biotech antibody comparable in quality to its monoclonal analogue. In addition, the influence of the protein tertiary structure – frequently present in epitopes formed during production of monoclonal antibodies – is eliminated in the immunoglobulins corresponding to the clonal antibody. DB Biotech produced antibodies correspond strictly to the conserved linear epitope of the antigen molecule, yielding a higher-quality, more specific antibody with significantly better affinity and avidity.

Founded in 2006, DB Biotech has earned an international reputation for the development of high quality antibodies used in research and routine clinical diagnostics. DB Biotech's goal is to establish a new gold standard for the development and application of antibodies on a daily basis, from background-free western blots, to special quantitative diagnostics, and potential applications of humanized antibodies for disease treatment purposes.

DB Biotech also offers **custom services** for the custom **design and production** of clonal antibodies against any protein or its modification. Our customers provide the name of the protein, and a detailed description of the modification or amino-acid sequences of interest to them. Our scientists then use our unique and proprietary methodologies to overcome the inherent limitations of traditional monoclonal antibody development. The significant advantages of the DB Biotech antibody development system have been conclusively demonstrated in multiple applications worldwide. We actively participate in grant-funded research projects and welcome challenging requests from our clients.



Proteomic services

Since 2011 our company has been providing highly sensitive/specific **protein identification services** with a flexible and professional customer approach.

The workflow for protein identification starts with the separation of a desired protein from the complex sample mixture according to the molecular weight using **SDS PAGE** or, in special cases, **FPLC**. We provide protein analysis from many different kind of samples including blood, urine and cerebrospinal fluid as well as cell lysates and tissue samples.

The customer will receive a picture of the electroforetically separated sample for confirmation of “protein of interest”. In addition, Coomassie blue or silver stained gel bands or spots prepared by the customer can be directly used for analysis.



Anti - Actin – rabbit clonal antibody

Cat. #:	DB001-IHC-0.1 (100 µl)	DB001-IHC-0.5 (500 µl)	DB001-IHC-RTU-7 (7 ml)
	DB001-IHC-0.2 (200 µl)	DB001-IHC-1 (1 ml)	DB001-IHC-RTU-15 (15 ml)

β-Actin monospecific antibody detects endogenous levels of β-actin. This antibody may cross-react with the γ-actin (cytoplasmic) isoform. It does not cross-react with α-skeletal, α-cardiac, α-vascular smooth, or γ-enteric smooth muscle isoforms.

Product information

Clone: S12-I

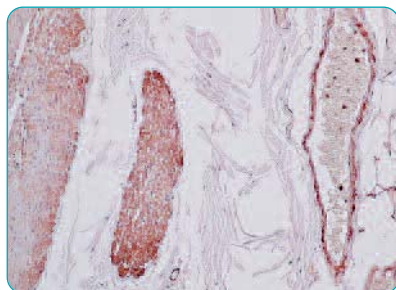
Specificity: Human

Protein accession number: P60709

Expiration: 24 months from the day of delivery

Immunogen: Peptide derived from C-terminal sequence of human β-actin

Application: IHC-P dilution 1:100 - 1:200; IHC-Fr application and dilution to be tested by the user



Formalin-fixed and paraffin-embedded human stomach tissue (4 µm) stained with anti-actin (DB001) antibody shows strong positive immunostaining of smooth muscle cells.

Anti - iNOS – rabbit clonal antibody

Cat. #:	DB003-IHC-0.1 (100 µl)	DB003-IHC-0.5 (500 µl)	DB003-IHC-RTU-7 (7 ml)
	DB003-IHC-0.2 (200 µl)	DB003-IHC-1 (1 ml)	DB003-IHC-RTU-15 (15 ml)

iNOS antibody detects endogenous levels of total iNOS protein.

Product information

Clone: K13-A

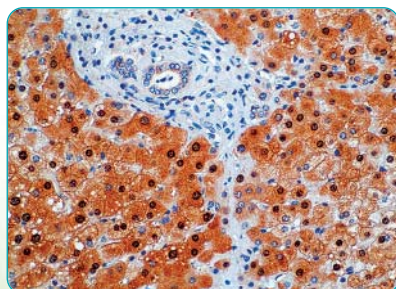
Specificity: Human

Protein accession number: P35228

Expiration: 24 months from the day of delivery

Immunogen: Peptide derived from human iNOS sequence

Application: IHC-P dilution 1:100 - 1:200; IHC-Fr application and dilution to be tested by the user



Formalin-fixed and paraffin-embedded human liver tissue (4 µm) stained with anti-iNOS (DB003) antibody shows strong positive immunostaining of hepatocytes.

Anti - p53 – rabbit clonal antibody

Cat. #: DB026-0.1 (100 µl)	DB026-0.5 (500 µl)	DB026-RTU-7 (7 ml)
DB026-0.2 (200 µl)	DB026-1 (1 ml)	DB026-RTU-15 (15 ml)

Tumor suppressor molecule. General marker of cell proliferation, where it's enhanced expression is in most cases related to cancer. This clone, specially produced for IHC-P applications, recognizes the epitope close to the N terminus of the human antigen. Outside of other uses, this antibody is a valuable prognostic marker of conventional renal cell carcinoma.

Product information

Clone: M26-A

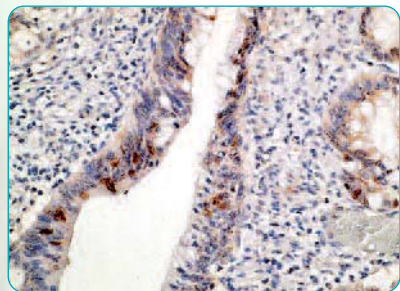
Protein accession number: P04637

Specificity: Human

Expiration: 24 months from the day of delivery

Immunogen: Peptide derived from N-terminal sequence of human p53

Application: IHC-P **dilution 1:100 - 1:500**; IHC-Fr application and dilution to be tested by the user



Formalin-fixed and paraffin-embedded human colon carcinoma tissue (4 µm) stained with anti-p53 (DB026) antibody shows positive nuclear immunostaining of tumor cells.

Anti - CD5 – rabbit clonal antibody

Cat. #: DB027-0.1 (100 µl)	DB027-0.5 (500 µl)	DB027-RTU-7 (7 ml)
DB027-0.2 (200 µl)	DB027-1 (1 ml)	DB027-RTU-15 (15 ml)

Transmembrane protein marker of lymphomas expressed on B and T cells. CD5 monospecific clonal rabbit antibody works exceptionally on lymph node and bone marrow biopsies. CD5 is a phenotypic marker of B cell lymphoproliferative diseases. CD5 positive B cell population is present in several autoimmune disorders, including diabetes mellitus (insulin-dependent), rheumatoid arthritis, and Sjögren syndrome. Expression of CD5 regulates the responsiveness of human T cell to interleukin-1. B cell lymphomas are relevant for CD5 antigen detection in related malignancies.

Product information

Clone: A25-G

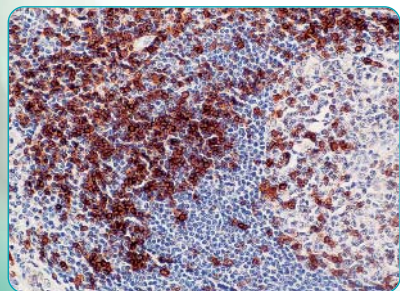
Protein accession number: P06127

Specificity: Human

Expiration: 24 months from the day of delivery

Immunogen: Peptide derived from C-terminal sequence of human CD5

Application: IHC-P **dilution 1:100 - 1:200**; IHC-Fr application and dilution to be tested by the user



Formalin-fixed and paraffin-embedded human tonsil tissue (4 µm) stained with anti-CD5 (DB027) antibody shows strong positive immunostaining of T-lymphocytes.

Anti - CD10 – rabbit clonal antibody

Cat. #: DB030-0.1 (100 µl)	DB030-0.5 (500 µl)	DB030-RTU-7 (7 ml)
DB030-0.2 (200 µl)	DB030-1 (1 ml)	DB030-RTU-15 (15 ml)

Common acute lymphoblastic leukemia antigen is a useful marker for the characterization of childhood leukemia and B-cell lymphomas. This antibody reacts with antigen of lymphoblastic, Burkitt and follicular lymphomas as well as chronic myelocytic leukemia. Also, anti-CD10 detects the antigen of glomerular epithelial cells and the brush border of the proximal tubules

Product information

Clone: E19-P

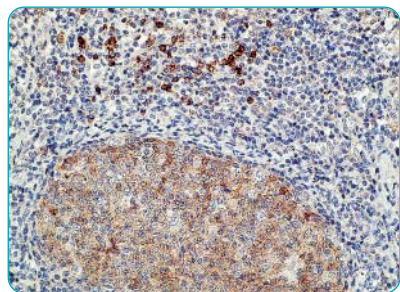
Protein accession number: P08473

Specificity: Human

Expiration: 24 months from the day of delivery

Immunogen: Peptide derived from the C-terminal sequence of human CD10

Application: IHC-P dilution 1:100 - 1:200; IHC-Fr application and dilution to be tested by the user



Formalin-fixed and paraffin-embedded human tonsil tissue (4 µm) stained with anti-CD10 (DB030) antibody shows positive immunostaining of germinal centre cells.

Anti - Human Kappa light chain – rabbit clonal antibody

Cat. #: DB037-0.1 (100 µl)	DB037-0.5 (500 µl)	DB037-RTU-7 (7 ml)
DB037-0.2 (200 µl)	DB037-1 (1 ml)	DB037-RTU-15 (15 ml)

Related antibody detects human IgG kappa light chain, cytoplasmic and/or secreted. The antibody is mostly used in plasmocytomas, non-Hodgkin's lymphomas and leukemias. The kappa light chain clonal antibody is used for direct diagnosis of leukemias, non-Hodgkin's lymphomas and plasmocytomas. Several new diagnostic methods are being applied for detection of kappa light chains in serum and urine.

Product information

Clone: A21-Y

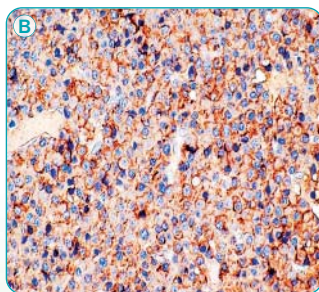
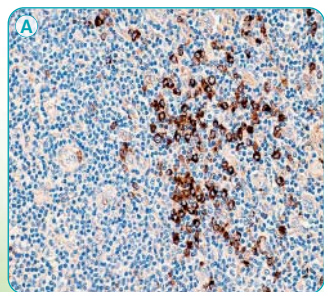
Protein accession number: P01834

Specificity: Human

Expiration: 24 months from the day of delivery

Immunogen: Peptide derived from N-terminal sequence of human kappa light chain IgG

Application: IHC-P dilution 1:100 - 1:500; IHC-Fr application and dilution to be tested by the user



Formalin-fixed and paraffin-embedded human tonsil tissue (A; 4 µm) and bone plasmocytoma (B; 4 µm) stained with anti-Human Kappa Light Chain antibody (DB037).

Anti - Human Kappa light chain – rabbit clonal antibody

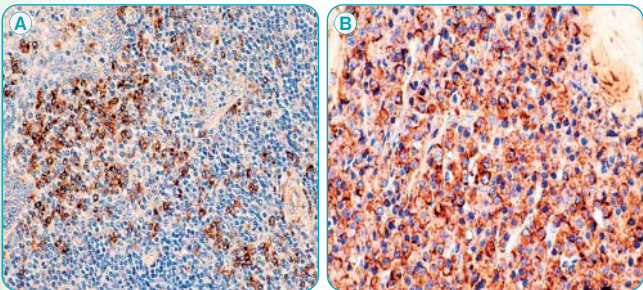
Cat. #:	DB038-0.1 (100 µl)	DB038-0.5 (500 µl)	DB038-RTU-7 (7 ml)
	DB038-0.2 (200 µl)	DB038-1 (1 ml)	DB038-RTU-15 (15 ml)

Related antibody detects human IgG kappa light chain, cytoplasmic and/or secreted. The antibody is mostly used in plasmocytomas, non-Hodgkin's lymphomas and leukemias. The kappa light chain clonal antibody is used for direct diagnosis of leukemias, non-Hodgkin's lymphomas and plasmocytomas. Several new diagnostic methods are being applied for detection of kappa light chains in serum and urine.

Product information

Clone:	H16-E	Specificity:	Human
Protein accession number:	P01834	Expiration:	24 months from the day of delivery

Immunogen: Peptide derived from C-terminal sequence of human kappa light chain IgG
Application: IHC-P dilution 1:100 - 1:500; IHC-Fr application and dilution to be tested by the user



Formalin-fixed and paraffin-embedded human tonsil tissue (A; 4 µm) and bone plasmocytoma (B; 4 µm) stained with anti-Human Kappa Light Chain antibody (DB038).

Anti - Human Lambda light chain – rabbit clonal antibody

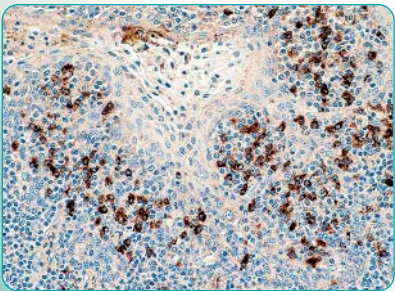
Cat. #:	DB039-0.1 (100 µl)	DB039-0.5 (500 µl)	DB039-RTU-7 (7 ml)
	DB039-0.2 (200 µl)	DB039-1 (1 ml)	DB039-RTU-15 (15 ml)

Antibody targeting the lambda light chains of human IgG in IHC-P application, mostly used in diagnostics of B-cell related malignancies, where the levels of this protein are highly elevated. The antibody works perfectly in bone marrow tissue.

Product information

Clone:	K22-Y	Specificity:	Human
Protein accession number:	P01842	Expiration:	24 months from the day of delivery

Immunogen: Peptide derived from N-terminal sequence of human lambda light chain IgG
Application: IHC-P dilution 1:100 - 1:1500; IHC-Fr application and dilution to be tested by the user



Formalin-fixed and paraffin-embedded human tonsil tissue (4 µm) stained with anti-Human Lambda Light Chain antibody (DB039).

Anti - CD20 – rabbit clonal antibody

Cat. #: DB041-0.1 (100 µl)	DB041-0.5 (500 µl)	DB041-RTU-7 (7 ml)
DB041-0.2 (200 µl)	DB041-1 (1 ml)	DB041-RTU-15 (15 ml)

CD20 protein is the most popular marker of lymphomas, expressed on surface of all mature B-cells. Its overexpression is often present in skin melanoma cells. CD20 is a transmembrane phosphoprotein that is expressed predominantly in peripheral B cells. It is also expressed at very low levels in certain subsets of human T cells. CD20 is strongly and homogeneously expressed in B cell-related malignancies. IHC-P of CD20 is mostly applied for diagnosis of lymphoid carcinoma.

Product information

Clone: E17-P

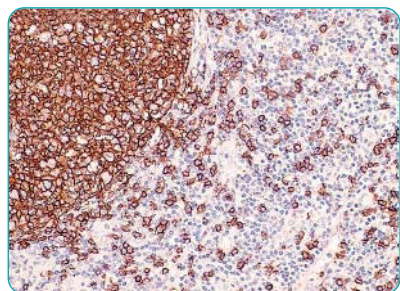
Specificity: Human

Protein accession number: P11836

Expiration: 24 months from the day of delivery

Immunogen: Peptide derived from C-terminal sequence of human CD20

Application: IHC-P dilution 1:100 - 1:200; IHC-Fr application and dilution to be tested by the user



Formalin-fixed and paraffin-embedded human tonsil tissue (4 µm) stained with anti-CD20 (DB041) antibody shows strong positive immunostaining.

Anti - CD45 – rabbit clonal antibody

Cat. #: DB042-0.1 (100 µl)	DB042-0.5 (500 µl)	DB042-RTU-7 (7 ml)
DB042-0.2 (200 µl)	DB042-1 (1 ml)	DB042-RTU-15 (15 ml)

Protein tyrosine phosphatase receptor CD45 is expressed on all leukocytes. Alternate expression is detected in all lymphomas, hairy cell leukemias and acute non-lymphocytic leukemia. This transmembrane protein (type I), originally called leukocyte common antigen, is present on differentiated hematopoietic cells (except erythrocytes and platelets) and highly expressed in hairy cell leukemia, lymphomas, B cell chronic lymphocytic leukemia and acute non-lymphocytic leukemia.

Product information

Clone: E19-G

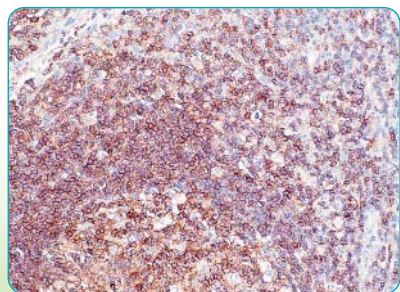
Specificity: Human

Protein accession number: P08575

Expiration: 24 months from the day of delivery

Immunogen: Peptide derived from C-terminal sequence of human CD45

Application: IHC-P dilution 1:100 - 1:1000; IHC-Fr application and dilution to be tested by the user



Formalin-fixed and paraffin-embedded human tonsil tissue (4 µm) stained with anti-CD45 (DB042) antibody shows strong positive immunostaining.

Anti - CD205 (RCC, DEC 205) – rabbit clonal antibody

Cat. #: DB043-0.1 (100 µl)	DB043-0.5 (500 µl)	DB043-RTU-7 (7 ml)
DB043-0.2 (200 µl)	DB043-1 (1 ml)	DB043-RTU-15 (15 ml)

Anti-renal cell carcinoma (RCC) antibody recognizes a 200kD glycoprotein (CD205 protein marker) localized in the brush border of the proximal renal tubule. This integral plasma membrane sialoglycoprotein is immunologically related to the EGF receptor in tumor cells. A relatively high expression of CD205 is detected in more than 90% of primary and more than 80% of metastatic renal cell carcinomas. Both clones represent the antibodies with very high avidity, detecting even a residual expression of CD205.

Product information

Clone: S19-P

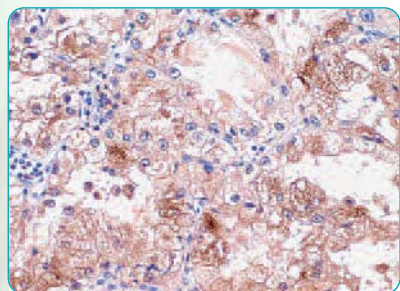
Specificity: Human

Protein accession number: O60449

Expiration: 24 months from the day of delivery

Immunogen: Peptide derived from N-terminal sequence of human CD205

Application: IHC-P dilution 1:100 - 1:200; IHC-Fr application and dilution to be tested by the user



Formalin-fixed and paraffin-embedded human renal cell carcinoma (4 µm) stained with anti-CD205 (DB043) antibody shows strong positive immunostaining of tumor cells.

Anti - CD205 (RCC, DEC 205) – rabbit clonal antibody

Cat. #: DB044-0.1 (100 µl)	DB044-0.5 (500 µl)	DB044-RTU-7 (7 ml)
DB044-0.2 (200 µl)	DB044-1 (1 ml)	DB044-RTU-15 (15 ml)

Anti-renal cell carcinoma (RCC) antibody recognizes a 200kD glycoprotein (CD205 protein marker) localized in the brush border of the proximal renal tubule. This integral plasma membrane sialoglycoprotein is immunologically related to the EGF receptor in tumor cells. A relatively high expression of CD205 is detected in more than 90% of primary and more than 80% of metastatic renal cell carcinomas. Both clones represent the antibodies with very high avidity, detecting even a residual expression of CD205.

Product information

Clone: R18-D

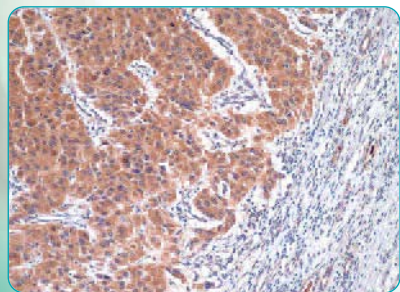
Specificity: Human

Protein accession number: O60449

Expiration: 24 months from the day of delivery

Immunogen: Peptide derived from C-terminal sequence of human CD205

Application: IHC-P dilution 1:100 - 1:200; IHC-Fr application and dilution to be tested by the user



Formalin-fixed and paraffin-embedded human renal cell carcinoma (4 µm) stained with anti-CD205 (DB044) antibody shows strong positive immunostaining of tumor cells.

Anti - CD163 – rabbit clonal antibody

Cat. #: DB045-0.1 (100 µl)	DB045-0.5 (500 µl)	DB045-RTU-7 (7 ml)
DB045-0.2 (200 µl)	DB045-1 (1 ml)	DB045-RTU-15 (15 ml)

Hemoglobin scavenger receptor-CD163 is expressed on surface of monocytes and macrophages with the expression alteration in several types of cancer. Infiltration of these cells in tumor tissue is used for immunochemical diagnostics of different types of cancer. A connection between CD163 positivity and acute myeloid leukemia with monocytic differentiation is evident.

Product information

Clone: K20-T

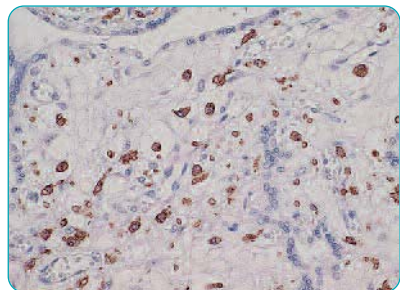
Protein accession number: Q86VB7

Specificity: Human

Expiration: 24 months from the day of delivery

Immunogen: Peptide derived from N-terminal sequence of human CD163

Application: IHC-P **dilution 1:100 - 1:200**; IHC-Fr application and dilution to be tested by the user



Formalin-fixed and paraffin-embedded human placenta (4 µm) stained with anti-CD163 (DB045) antibody shows strong positive cytoplasmic immunostaining of monocytes and macrophages.

Anti - PLAP (Placental Alkaline Phosphatase) – rabbit clonal antibody

Cat. #: DB047-0.1 (100 µl)	DB047-0.5 (500 µl)	DB047-RTU-7 (7 ml)
DB047-0.2 (200 µl)	DB047-1 (1 ml)	DB047-RTU-15 (15 ml)

Placental alkaline phosphatase is found in normal human placenta; overexpressed in seminoma of testis and ovarian carcinomas. This tissue specific alkaline phosphatase is recognized as an important marker for monitoring behavior of tumoral cells in human malignancies. The protein is more frequently detected in tissue than in serum of ovarian cancer patients.

Product information

Clone: P16-D

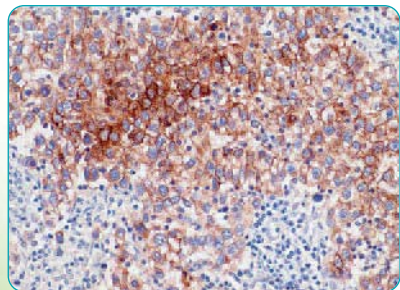
Protein accession number: P05187

Specificity: Human

Expiration: 24 months from the day of delivery

Immunogen: Peptide derived from the middle portion of human PLAP sequence

Application: IHC-P **dilution 1:100 - 1:200**; IHC-Fr application and dilution to be tested by the user



Formalin-fixed and paraffin-embedded human seminoma (4 µm) stained with anti-Placental Alkaline Phosphatase (DB047) antibody shows strong positive membrane immunostaining of tumor cells.

Anti - CD227 (Mucin-1, EMA) – rabbit clonal antibody

Cat. #: DB048-0.1 (100 µl)	DB048-0.5 (500 µl)	DB048-RTU-7 (7 ml)
DB048-0.2 (200 µl)	DB048-1 (1 ml)	DB048-RTU-15 (15 ml)

Anti-EMA antibody is a useful marker for staining several types of carcinomas. It stains normal and neoplastic cells from various tissues, including mammary epithelium, sweat glands and squamous epithelium. Hepatocellular carcinoma, adrenal carcinoma and embryonal carcinomas are consistently EMA negative, so keratin positivity with negative EMA favors one of these tumors. EMA is frequently positive in meningiomas, breast, ovary, lung and prostate tumors.

Product information

Clone: G22-L

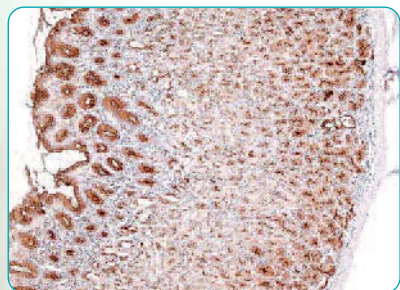
Specificity: Human

Protein accession number: P15941

Expiration: 24 months from the day of delivery

Immunogen: Peptide derived from C-terminal sequence of human Mucin-1

Application: IHC-P dilution 1:100 - 1:200; IHC-Fr 1:400 - 1:600



Formalin-fixed and paraffin-embedded human stomach tissue (4 µm) stained with anti-epithelial membrane antigen (DB048) antibody shows strong positive immunostaining of epithelial cells.

Anti - Melanosome – rabbit clonal antibody

Cat. #: DB049-0.1 (100 µl)	DB049-0.5 (500 µl)	DB049-RTU-7 (7 ml)
DB049-0.2 (200 µl)	DB049-1 (1 ml)	DB049-RTU-15 (15 ml)

Anti-Melanoma stains fetal and neonatal melanocytes, junctional nevus and blue nevus cells and malignant melanocytes. This melanocyte-associated antigen is a type I integral membrane protein associated with melanosomal matrix formation in melanosomes.

Product information

Clone: P14-V

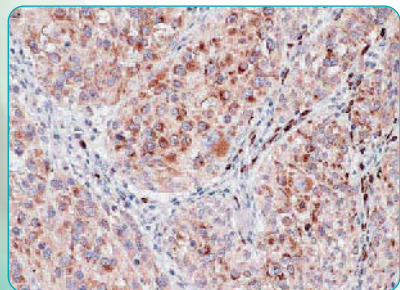
Specificity: Human

Protein accession number: P40967

Expiration: 24 months from the day of delivery

Immunogen: Peptide derived from C-terminal sequence of human melanosome/gp100

Application: IHC-P dilution 1:100 - 1:200; IHC-Fr application and dilution to be tested by the user



Formalin-fixed and paraffin-embedded human melanoma skin cancer tissue (4 µm) stained with anti-Melanosome (DB049) antibody shows specific positive immunostaining.

Anti - Melan A – rabbit clonal antibody

Cat. #: DB050-0.1 (100 µl)	DB050-0.5 (500 µl)	DB050-RTU-7 (7 ml)
DB050-0.2 (200 µl)	DB050-1 (1 ml)	DB050-RTU-15 (15 ml)

Melan A is a specific marker of melanocytes. Immunohistochemistry is applied in melanocytic differentiation studies related to melanocytic tumors.

Product information

Clone: A19-P

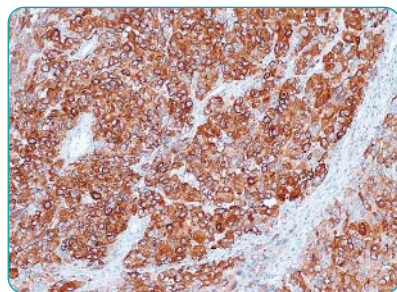
Specificity: Human

Protein accession number: Q16655

Expiration: 24 months from the day of delivery

Immunogen: Peptide derived from C-terminal sequence of human Melan A

Application: IHC-P dilution 1:100 - 1:200; IHC-Fr application and dilution to be tested by the user



Formalin-fixed and paraffin-embedded human melanoma (4 µm) stained with anti-Melan A (DB050) antibody shows positive cytoplasmic immunostaining of tumor cells.

Anti - Cytokeratin 7 – rabbit clonal antibody

Cat. #: DB051-0.1 (100 µl)	DB051-0.5 (500 µl)	DB051-RTU-7 (7 ml)
DB051-0.2 (200 µl)	DB051-1 (1 ml)	DB051-RTU-15 (15 ml)

Low molecular weight cytokeratin. Its expression is restricted to the epithelia and their neoplasms. Overexpression of CK7 has been detected in the majority of epithelial carcinomas. It is successfully used in detection of renal cell carcinomas, ovarian metastatic carcinomas and in discriminating the primary pulmonary adenocarcinoma from metastatic adenocarcinoma.

Product information

Clone: R17-S

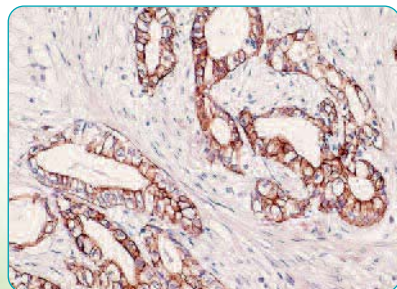
Specificity: Human

Protein accession number: P08729

Expiration: 24 months from the day of delivery

Immunogen: Peptide derived from N-terminal sequence of human cytokeratin 7

Application: IHC-P dilution 1:100 - 1:200; IHC-Fr application and dilution to be tested by the user



Formalin-fixed and paraffin-embedded human pancreatic tissue (4 µm) stained with anti-Cytokeratin 7 (DB051) antibody shows positive immunostaining of pancreatic adenocarcinoma.

Anti - ER (Estrogen receptor) – rabbit clonal antibody

Cat. #: DB053-0.1 (100 µl)	DB053-0.5 (500 µl)	DB053-RTU-7 (7 ml)
DB053-0.2 (200 µl)	DB053-1 (1 ml)	DB053-RTU-15 (15 ml)

Estrogen Receptor- α antibody stains nuclei of breast epithelial cells and some carcinomas, as well as endometrial epithelia and myometrium. By binding to the DNA, estrogen receptor- α regulates positively or negatively the gene expression. ER plays an important role in regulation of mammary gland growth and differentiation. Its overexpression can be found in more than 70% of breast cancer.

Product information

Clone: S21-V

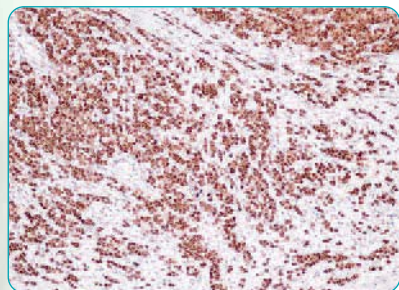
Protein accession number: P03372

Specificity: Human

Expiration: 24 months from the day of delivery

Immunogen: Peptide derived from C-terminal sequence of human estrogen receptor alpha

Application: IHC-P dilution 1:100 - 1:200; IHC-Fr application and dilution to be tested by the user



Formalin-fixed and paraffin-embedded human of breast tumor tissue (4 µm) stained with anti-ER (DB053) antibody shows strong positive nuclear immunostaining.

Anti - S-100 – rabbit clonal antibody

Cat. #: DB055-0.1 (100 µl)	DB055-0.5 (500 µl)	DB055-RTU-7 (7 ml)
DB055-0.2 (200 µl)	DB055-1 (1 ml)	DB055-RTU-15 (15 ml)

S-100 is a low molecular weight protein expressed in glial cells, chondrocytes, macrophages, Langerhans cells, dendritic cells, adipocytes, keratinocytes and breast epithelial cells. S-100 is involved in regulation of protein phosphorylation, calcium homeostasis, cell differentiation, and inflammatory response. In clinical diagnostics, S-100 protein expression is used as a marker of peripheral nerve tumors, astrocytomas, melanomas and clear cell sarcomas.

Product information

Clone: D28-E

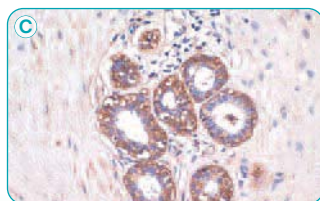
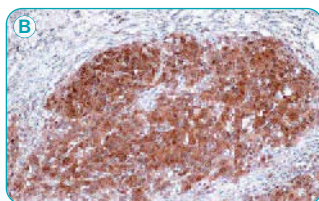
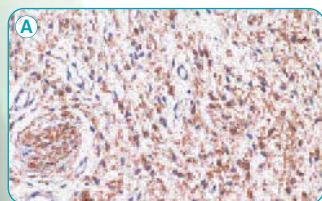
Protein accession number: P23297

Specificity: Human

Expiration: 24 months from the day of delivery

Immunogen: Peptide derived from C-terminal sequence of human S100-A1 protein

Application: IHC-P dilution 1:100 - 1:200; IHC-Fr application and dilution to be tested by the user



Formalin-fixed and paraffin-embedded human neurofibroma tissue (A; 4 µm), skin melanoma tissue (B; 4 µm), and human breast tissue (C; 4 µm) stained with anti-S100 (DB055) show: **A** - positive immunostaining of tumor cells and peripheral nerve; **B** - strong positive immunostaining of melanoma cells; **C** - strong positive immunostaining of the outer myoepithelial cell component in mammary lobule.

Anti - CD10 – rabbit clonal antibody

Cat. #: DB057-0.1 (100 µl)	DB057-0.5 (500 µl)	DB057-RTU-7 (7 ml)
DB057-0.2 (200 µl)	DB057-1 (1 ml)	DB057-RTU-15 (15 ml)

Common acute lymphoblastic leukemia antigen is a useful marker for the characterization of childhood leukemia and B-cell lymphomas. This antibody reacts with antigen of lymphoblastic, Burkitt and follicular lymphomas as well as chronic myelocytic leukemia. Also, anti-CD10 detects the antigen of glomerular epithelial cells and the brush border of the proximal tubules.

Product information

Clone: G27-P

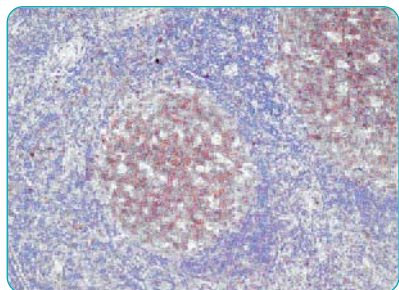
Protein accession number: P08473

Specificity: Human

Expiration: 24 months from the day of delivery

Immunogen: Peptide derived from N-terminal region of human CD-10

Application: IHC-P dilution 1:100 - 1:300; IHC-Fr application and dilution to be tested by the user



Formalin-fixed and paraffin-embedded human tonsil tissue (4 µm) stained with anti-CD10 (DB057) antibody shows strong positive immunostaining of germinal centre cells.

Anti - PR (Progesterone receptor) – rabbit clonal antibody

Cat. #: DB059-0.1 (100 µl)	DB059-0.5 (500 µl)	DB059-RTU-7 (7 ml)
DB059-0.2 (200 µl)	DB059-1 (1 ml)	DB059-RTU-15 (15 ml)

Intracellular steroid receptor of progesterone, which expression alterations are used in breast cancer diagnostics and prediction of related hormonal treatment.

Product information

Clone: P21-S

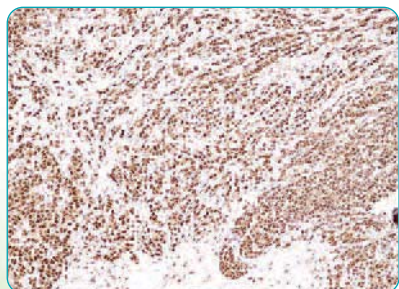
Protein accession number: P06401-1; P06401-2

Specificity: Human

Expiration: 24 months from the day of delivery

Immunogen: Peptide derived from C-terminus of inhibitory domain (IF) of human progesterone receptor

Application: IHC-P dilution 1:100 - 1:400; IHC-Fr application and dilution to be tested by the user



Formalin-fixed and paraffin-embedded human breast carcinoma (4 µm) stained with anti-progesterone receptor (DB059) antibody shows strong positive nuclear immunostaining of tumor cells.

Anti - EBV/LMP-1 – rabbit clonal antibody

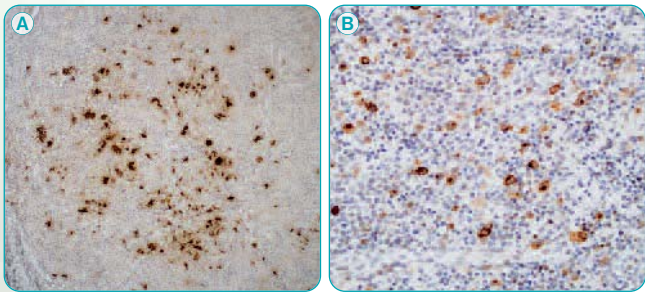
Cat. #:	DB060-0.1 (100 µl)	DB060-0.5 (500 µl)	DB060-RTU-7 (7 ml)
	DB060-0.2 (200 µl)	DB060-1 (1 ml)	DB060-RTU-15 (15 ml)

This antibody recognizes Latent Membrane Protein-1 (LMP-1) of Epstein-Barr virus (EBV).

Product information

Clone:	D24-G	Specificity:	Human
Protein accession number:	P03230	Expiration:	24 months from the day of delivery

Immunogen: Peptide derived from the internal region of Epstein-Barr virus, Latent Membrane Protein-1
Application: IHC-P dilution 1:100 - 1:200; IHC-Fr application and dilution to be tested by the user



Formalin-fixed and paraffin-embedded human lymph node tissue (4 µm) corresponding to Hodgkin's lymphoma (A) and EBV infectious mononucleosis (B) stained with anti-EBV/LMP-1 (DB060) antibody.

Anti - EBV/LMP-1 – rabbit clonal antibody

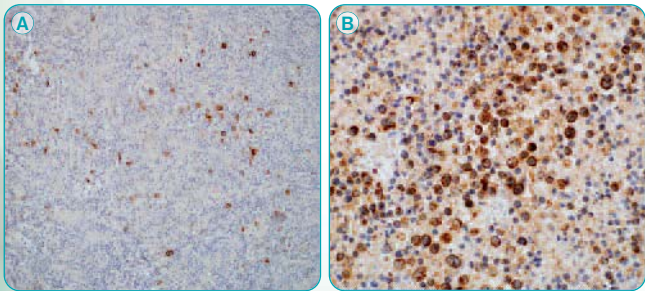
Cat. #:	DB061-0.1 (100 µl)	DB061-0.5 (500 µl)	DB061-RTU-7 (7 ml)
	DB061-0.2 (200 µl)	DB061-1 (1 ml)	DB061-RTU-15 (15 ml)

This antibody recognizes Latent Membrane Protein-1 (LMP-1) of Epstein-Barr virus (EBV).

Product information

Clone:	S20-D	Specificity:	Human
Protein accession number:	P03230	Expiration:	24 months from the day of delivery

Immunogen: Peptide derived from the C-terminal region of Epstein-Barr virus, Latent Membrane Protein-1
Application: IHC-P dilution 1:100 - 1:200; IHC-Fr application and dilution to be tested by the user



Formalin-fixed and paraffin-embedded human lymph node tissue (4 µm) corresponding to Hodgkin's lymphoma (A) and EBV infectious mononucleosis (B) stained with anti-EBV/LMP-1 (DB061) antibody.

Anti - CD117 – rabbit clonal antibody

Cat. #: DB062-0.1 (100 µl)	DB062-0.5 (500 µl)	DB062-RTU-7 (7 ml)
DB062-0.2 (200 µl)	DB062-1 (1 ml)	DB062-RTU-15 (15 ml)

This receptor tyrosine kinase, also known as proto-oncogene c-Kit, is expressed mostly at the surface of hematopoietic cells. Its altered expression and/or mutations are detected in several types of cancer. Overexpression of CD117 is associated with melanomas, seminomas, acute myeloid leukemia and gastrointestinal tumors.

Product information

Clone: R21-V

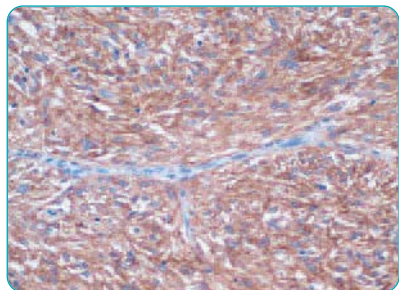
Specificity: Human

Protein accession number: P10721

Expiration: 24 months from the day of delivery

Immunogen: Peptide derived from C-terminal sequence of human CD117

Application: IHC-P dilution 1:100 - 1:200; IHC-Fr application and dilution to be tested by the user



Formalin-fixed and paraffin-embedded human gastrointestinal tissue (4 µm) stained with anti-CD117 (DB062) antibody shows strong immunostaining of neoplastic cell in large bowel stromal tumor.

Anti - Bcl-2 – rabbit clonal antibody

Cat. #: DB064-0.1 (100 µl)	DB064-0.5 (500 µl)	DB064-RTU-7 (7 ml)
DB064-0.2 (200 µl)	DB064-1 (1 ml)	DB064-RTU-15 (15 ml)

Anti Bcl-2 has shown consistent negative reaction on reactive germinal centers and positive staining of neoplastic follicles in follicular lymphoma.

Product information

Clone: P21-A

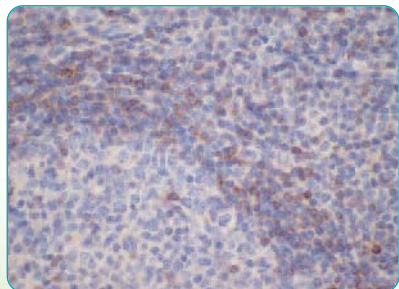
Specificity: Human

Protein accession number: P10415

Expiration: 24 months from the day of delivery

Immunogen: Peptide derived from the sequence close to N-terminal region of human bcl-2

Application: IHC-P dilution 1:100 - 1:200; IHC-Fr application and dilution to be tested by the user



Formalin-fixed and paraffin-embedded human tonsil tissue (4 µm) stained with anti-Bcl-2 (DB064) antibody shows strong membrane immunostaining of follicular cells.

Anti - Cyclin D1 – rabbit clonal antibody

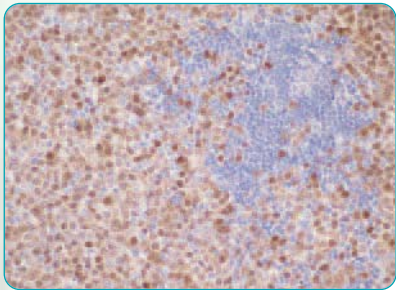
Cat. #:	DB066-0.1 (100 µl)	DB066-0.5 (500 µl)	DB066-RTU-7 (7 ml)
	DB066-0.2 (200 µl)	DB066-1 (1 ml)	DB066-RTU-15 (15 ml)

Cyclin D1 is a putative proto-oncogene overexpressed in a wide variety of human neoplasms. This antibody is useful for separating mantle cell lymphomas (anti-cyclin D1 positive) from SLLs and small cleaved cell lymphomas (anti-cyclin D1 negative).

Product information

Clone:	E16-I	Specificity:	Human
Protein accession number:	P24385	Expiration:	24 months from the day of delivery

Immunogen: Peptide derived from C-terminal region of human cyclin D1
Application: IHC-P dilution 1:100 - 1:200; IHC-Fr application and dilution to be tested by the user



Formalin-fixed and paraffin-embedded human mantle cell lymphoma-lymph node tissue (4 µm) stained with anti-cyclin D1 (DB066) antibody shows strong positive nuclear immunostaining of tumor cells.

Anti - Ki-67 – rabbit clonal antibody

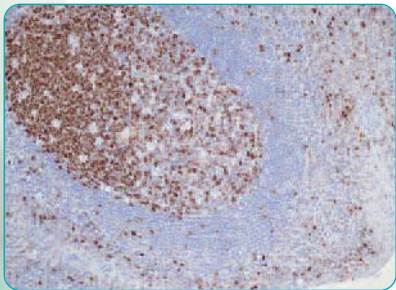
Cat. #:	DB070-0.1 (100 µl)	DB070-0.5 (500 µl)	DB070-RTU-7 (7 ml)
	DB070-0.2 (200 µl)	DB070-1 (1 ml)	DB070-RTU-15 (15 ml)

Over-expression of Ki-67 is strictly associated with cell proliferation. Positivity of cell nuclei mostly correlates with the clinical course of different malignancies.

Product information

Clone:	C16-I	Specificity:	Human
Protein accession number:	P46013	Expiration:	24 months from the day of delivery

Immunogen: Peptide derived from C-terminal region of human Ki-67
Application: IHC-P dilution 1:100 - 1:200; IHC-Fr application and dilution to be tested by the user



Formalin-fixed and paraffin-embedded human tonsil tissue (4 µm) stained with anti-Ki-67 (DB070) antibody shows strong and specific nuclear immunostaining of proliferating cells.

Anti - CD1a – rabbit clonal antibody

Cat. #:	DB071-0.1 (100 µl)	DB071-0.5 (500 µl)	DB071-RTU-7 (7 ml)
	DB071-0.2 (200 µl)	DB071-1 (1 ml)	DB071-RTU-15 (15 ml)

CD1a has been shown to be expressed on dendritic cells and cortical thymocytes. This antigen is expressed on cells comprising Langerhans cell sarcoma and Langerhans cell histiocytosis.

Product information

Clone: L21-A

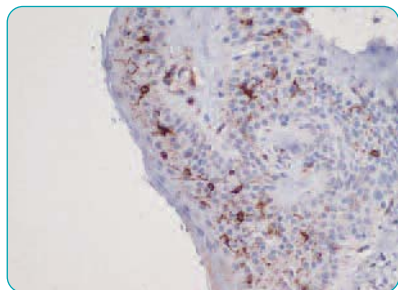
Specificity: Human

Protein accession number: P06126

Expiration: 24 months from the day of delivery

Immunogen: Peptide derived from C-terminal region, near the transmembrane domain of human CD1-a

Application: IHC-P dilution 1:100 - 1:200; IHC-Fr application and dilution to be tested by the user



Formalin-fixed and paraffin-embedded human skin cells (4 µm) stained with anti-CD1a (DB071) antibody show strong positive immunostaining of Langerhans cells in epidermis.

Anti - CD3 – rabbit clonal antibody

Cat. #:	DB082-0.1 (100 µl)	DB082-0.5 (500 µl)	DB082-RTU-7 (7 ml)
	DB082-0.2 (200 µl)	DB082-1 (1 ml)	DB082-RTU-15 (15 ml)

CD3 has been considered an all around T-cell marker. The positive staining of this marker may represent a sign of early commitment to the T-cell lineage.

Product information

Clone: N26-R

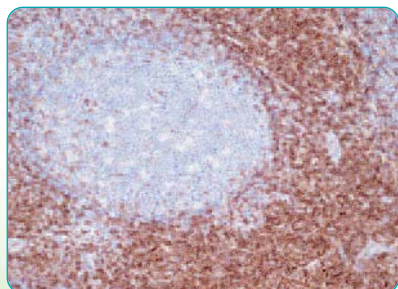
Specificity: Human

Protein accession number: P07766

Expiration: 24 months from the day of delivery

Immunogen: Peptide derived from cytoplasmic, C-terminal region of human CD3-epsilon chain

Application: IHC-P dilution 1:100 - 1:200; IHC-Fr application and dilution to be tested by the user



Formalin-fixed and paraffin-embedded human tonsil tissue (4 µm) stained with anti-CD3 (DB082) antibody shows strong immunostaining of T-lymphocytes.

Anti - CD8 – rabbit clonal antibody

Cat. #: DB085-0.1 (100 µl)	DB085-0.5 (500 µl)	DB085-RTU-7 (7 ml)
DB085-0.2 (200 µl)	DB085-1 (1 ml)	DB085-RTU-15 (15 ml)

The CD8 antigen is cell surface glycoprotein found on most cytotoxic T-lymphocytes that mediates efficient cell-cell interaction within the immune system. CD8 is a transmembrane glycoprotein that serves as co-receptor for the T-cell receptor. A primary function of CD8 is to facilitate antigen recognition by the TCR and to strengthen the avidity of the TCR-antigen interaction.

Product information

Clone: P17-V

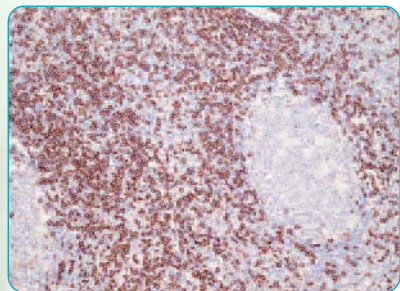
Protein accession number: P01732

Specificity: Human

Expiration: 24 months from the day of delivery

Immunogen: Peptide derived from C-terminal region of human CD8

Application: IHC-P dilution 1:100 - 1:200; IHC-Fr application and dilution to be tested by the user



Formalin-fixed and paraffin-embedded human tonsil tissue (4 µm) stained with anti-CD8 antibody (DB085) shows strong membranous immunostaining of T-lymphocytes.

Anti - TTF-1 – rabbit clonal antibody

Cat. #: DB089-0.1 (100 µl)	DB089-0.5 (500 µl)	DB089-RTU-7 (7 ml)
DB089-0.2 (200 µl)	DB089-1 (1 ml)	DB089-RTU-15 (15 ml)

TTF-1 antibody is useful in differentiating the primary adenocarcinoma of the lung from metastatic carcinomas from the breast, mediastinal germ cell tumors and malignant mesothelioma.

Product information

Clone: G21-G

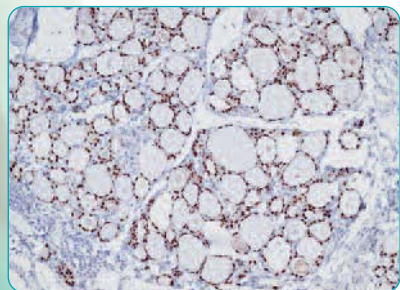
Protein accession number: P43699

Specificity: Human

Expiration: 24 months from the day of delivery

Immunogen: Peptide derived from N-terminal sequence of human TTF-1

Application: IHC-P dilution 1:100 - 1:200; IHC-Fr application and dilution to be tested by the user



Formalin-fixed and paraffin-embedded human thyroid gland tissue (4 µm) stained with anti-TTF-1 (DB089) antibody shows strong positive nuclear immunostaining of follicular cells.

Anti - TTF-1 – rabbit clonal antibody

Cat. #: DB090-0.1 (100 µl)	DB090-0.5 (500 µl)	DB090-RTU-7 (7 ml)
DB090-0.2 (200 µl)	DB090-1 (1 ml)	DB090-RTU-15 (15 ml)

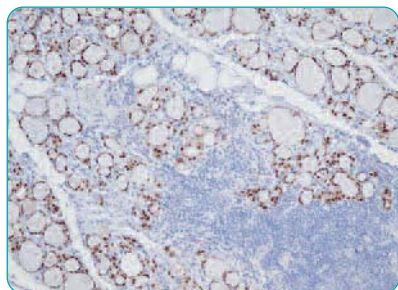
TTF-1 antibody is useful in differentiating of the primary adenocarcinoma of the lung from metastatic carcinomas from the breast, mediastinal germ cell tumors and malignant mesothelioma.

Product information

Clone: C12-I	Specificity: Human
Protein accession number: P43699	Expiration: 24 months from the day of delivery

Immunogen: Peptide derived from C-terminal sequence of human TTF-1

Application: IHC-P dilution 1:100 - 1:300; IHC-Fr application and dilution to be tested by the user



Formalin-fixed and paraffin-embedded human thyroid gland tissue (4 µm) stained with anti-TTF-1 (DB090) antibody shows strong positive nuclear immunostaining of follicular cells.

Anti - EGFR – rabbit clonal antibody

Cat. #: DB092-0.1 (100 µl)	DB092-0.5 (500 µl)	DB092-RTU-7 (7 ml)
DB092-0.2 (200 µl)	DB092-1 (1 ml)	DB092-RTU-15 (15 ml)

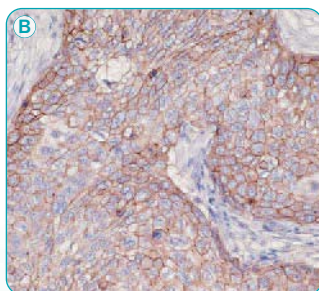
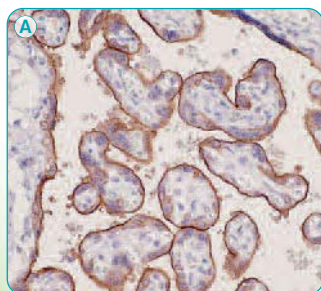
Epidermal Growth Factor Receptor (EGFR) is the prototype member of the type 1 receptor tyrosine kinases. EGFR overexpression in tumors indicates poor prognosis and is observed in tumors of the head and neck, brain, bladder, stomach, breast, lung, endo-metrium, cervix, vulva, ovary, esophagus, stomach and in squamous cell carcinoma.

Product information

Clone: A20-E	Specificity: Human
Protein accession number: P00533	Expiration: 24 months from the day of delivery

Immunogen: Peptide derived from C-terminal region of human epidermal growth factor receptor (EGFR)

Application: IHC-P dilution 1:100 - 1:200; IHC-Fr application and dilution to be tested by the user



Formalin-fixed and paraffin-embedded human placenta (A, 4 µm) and squamous cell skin carcinoma (B, 4 µm) stained with anti-EGFR antibody (DB092) shows strong positive membrane immunostaining of syncytiotrophoblasts (A) and strong membrane staining of tumor cells (B).

Anti - Cerb-2 (Her-2/neu) – rabbit clonal antibody

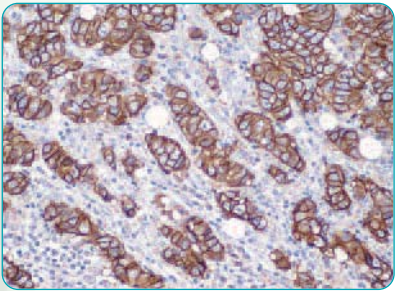
Cat. #:	DB094-0.1 (100 µl)	DB094-0.5 (500 µl)	DB094-RTU-7 (7 ml)
	DB094-0.2 (200 µl)	DB094-1 (1 ml)	DB094-RTU-15 (15 ml)

Also known as Her-2/neu, this protein marker is often over-expressed in breast cancer. The IHC-P bioptic examination often offers the predictive and prognostic information.

Product information

Clone:	A24-V	Specificity:	Human
Protein accession number:	P04626	Expiration:	24 months from the day of delivery

Immunogen: Peptide derived from C-terminal region of human Cerb-2
Application: IHC-P dilution 1:100 - 1:300; IHC-Fr application and dilution to be tested by the user



Formalin-fixed and paraffin-embedded human breast ductal carcinoma tissue (4 µm) stained with anti-Cerb-2 antibody (DB094) shows strong membranous immunostaining of neoplastic cells.

Anti - Cytokeratin 8 – rabbit clonal antibody

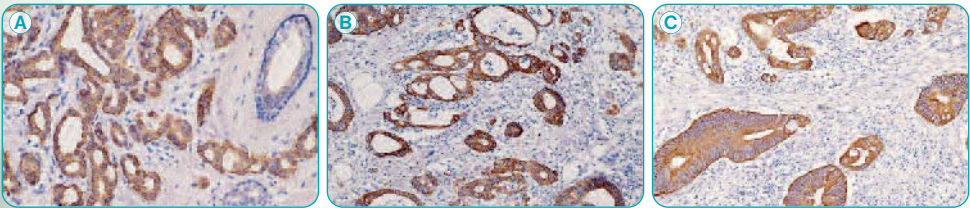
Cat. #:	DB098-0.1 (100 µl)	DB098-0.5 (500 µl)	DB098-RTU-7 (7 ml)
	DB098-0.2 (200 µl)	DB098-1 (1 ml)	DB098-RTU-15 (15 ml)

This antibody is used for detection of epithelium-related cancer of human colon carcinoma. CK8 expression is associated with some other types of cancer as well.

Product information

Clone:	R15-K	Specificity:	Human
Protein accession number:	P05787	Expiration:	24 months from the day of delivery

Immunogen: Peptide derived from C-terminal region of human Cytokeratin 8
Application: IHC-P dilution 1:100 - 1:200; IHC-Fr application and dilution to be tested by the user



Formalin-fixed and paraffin-embedded human breast cancer tissue (A, 4 µm), human stomach adenocarcinoma (B, 4 µm), and human colon adenocarcinoma (C, 4 µm), stained with anti-Cytokeratin 8 antibody (DB098) shows strong positive cytoplasmic immunostaining of neoplastic cells (A), strong positive cytoplasmic immunostaining of tumor cells (B, C).

Anti - Cytokeratin 14 – rabbit clonal antibody

Cat. #: DB099-0.1 (100 µl)	DB099-0.5 (500 µl)	DB099-RTU-7 (7 ml)
DB099-0.2 (200 µl)	DB099-1 (1 ml)	DB099-RTU-15 (15 ml)

Epithelial cytokeratin found in squamous basal cells, myoepithelium and mesothelial cells. Use also for diagnostics of metastatic breast carcinoma.

Product information

Clone: D19-N

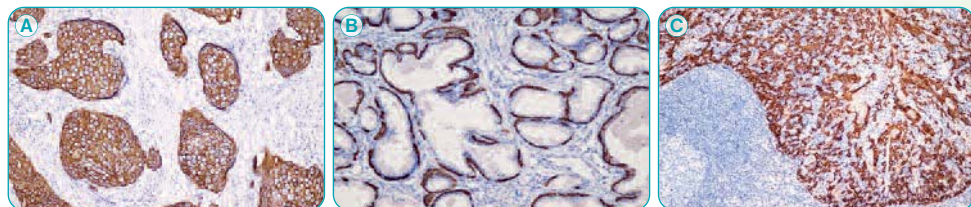
Specificity: Human

Protein accession number: P02533

Expiration: 24 months from the day of delivery

Immunogen: Peptide derived from C-terminal region of human Cytokeratin 14

Application: IHC-P dilution 1:100 - 1:200; IHC-Fr application and dilution to be tested by the user



Formalin-fixed and paraffin-embedded human skin squamous cell carcinoma (A, µm), prostate hyperplasia (B, µm), and human tonsil tissue (C, µm) stained with anti-Cytokeratin 14 antibody (DB099) shows strong positive cytoplasmic immunostaining of the neoplastic cells (A), strong positive cytoplasmic immunostaining in the basal cells of the normal and benign glands (B), and positive cytoplasmic immunostaining of the squamous epithelial cells (C).

Anti - Cytokeratin 16 – rabbit clonal antibody

Cat. #: DB100-0.1 (100 µl)	DB100-0.5 (500 µl)	DB100-RTU-7 (7 ml)
DB100-0.2 (200 µl)	DB100-1 (1 ml)	DB100-RTU-15 (15 ml)

Abnormal expression of CK16 is found in epithelial cancer – cervical squamous carcinoma, non-melanocytic skin cancer, basal cell carcinoma.

Product information

Clone: R20-S

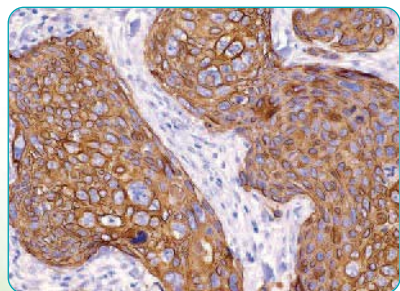
Specificity: Human

Protein accession number: P08779

Expiration: 24 months from the day of delivery

Immunogen: Peptide derived from C-terminal region of human Cytokeratin 16

Application: IHC-P dilution 1:100 - 1:200; IHC-Fr application and dilution to be tested by the user



Formalin-fixed and paraffin-embedded human squamous cell skin carcinoma tissue (4 µm) stained with anti-Cytokeratin 16 antibody (DB100) shows strong positive cytoplasmic immunostaining of neoplastic cells.

Anti - Cytokeratin 17 – rabbit clonal antibody

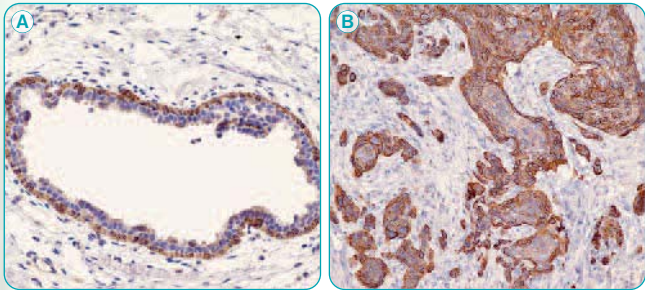
Cat. #:	DB101-0.1 (100 µl)	DB101-0.5 (500 µl)	DB101-RTU-7 (7 ml)
	DB101-0.2 (200 µl)	DB101-1 (1 ml)	DB101-RTU-15 (15 ml)

Cytokeratin 17 is mostly expressed in complex epithelia. The antibody is used as a specific marker of basal cell differentiation.

Product information

Clone:	V21-R	Specificity:	Human
Protein accession number:	Q04695	Expiration:	24 months from the day of delivery

Immunogen: Peptide derived from C-terminal region of human Cytokeratin 17
Application: IHC-P dilution 1:100 - 1:200; IHC-Fr application and dilution to be tested by the user



Formalin-fixed and paraffin-embedded human squamous skin carcinoma (A, 4 µm), and human breast tissue (B, 4 µm), stained with anti-Cytokeratin 17 antibody (DB101) shows strong positive cytoplasmic immunostaining of tumor cells (A), and strong positive cytoplasmic immunostaining of myo-epithelial cells in hyperplastic duct (B).

Anti - Cytokeratin 18 – rabbit clonal antibody

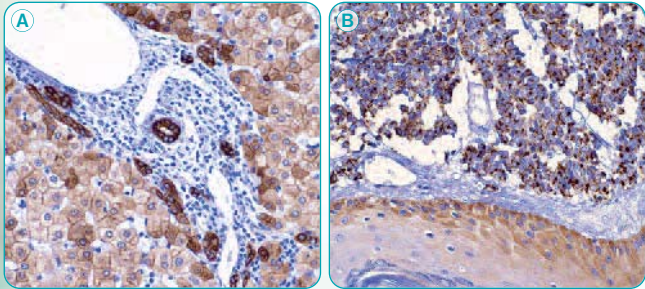
Cat. #:	DB102-0.1 (100 µl)	DB102-0.5 (500 µl)	DB102-RTU-7 (7 ml)
	DB102-0.2 (200 µl)	DB102-1 (1 ml)	DB102-RTU-15 (15 ml)

Immunohistochemistry of cytokeratin 18 is used for diagnostics of cancer in glandular epithelia. Discrepancies in expression are detected in several types of carcinomas: colon, respiratory, urogenital, endocrine and exocrine tissues.

Product information

Clone:	R20-H	Specificity:	Human
Protein accession number:	P05783	Expiration:	24 months from the day of delivery

Immunogen: Peptide derived from C-terminal region of human Cytokeratin 18
Application: IHC-P dilution 1:100 - 1:300; IHC-Fr application and dilution to be tested by the user



Formalin-fixed and paraffin-embedded human liver tissue (A, 4 µm), and skin tissue with neuroendocrine carcinoma of skin – Merkel cell carcinoma (B, 4 µm), stained with anti-Cytokeratin 18 antibody (DB102) shows strong positive cytoplasmic immunostaining of the bile duct epithelial cells and weak to moderate stains of liver cells (A), strong positive cytoplasmic and dot-like immunostaining of neoplastic cells (B).

Anti - Cytokeratin 19 – rabbit clonal antibody

Cat. #:	DB103-0.1 (100 µl)	DB103-0.5 (500 µl)	DB103-RTU-7 (7 ml)
	DB103-0.2 (200 µl)	DB103-1 (1 ml)	DB103-RTU-15 (15 ml)

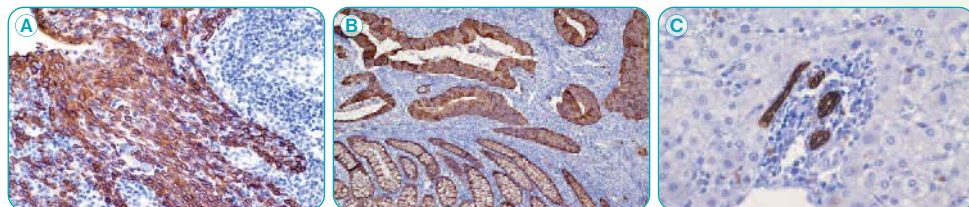
Cytokeratin 19 expression is associated with a wide variety of epithelium and epithelial malignancies including adenocarcinomas of the colon, stomach, pancreas, biliary tract, liver and breast.

Product information

Clone:	E16-L	Specificity:	Human
Protein accession number:	P08727	Expiration:	24 months from the day of delivery

Immunogen: Peptide derived from C-terminal region of human Cytokeratin 19

Application: IHC-P dilution 1:100 - 1:200; IHC-Fr application and dilution to be tested by the user



Formalin-fixed and paraffin-embedded human tonsil tissue (A, 4 µm), human colon adenocarcinoma (B, 4 µm), and human liver tissue (C, 4 µm), stained with anti-Cytokeratin 19 antibody (DB103) shows strong positive cytoplasmic immunostaining of the squamous epithelial cells (A), strong positive cytoplasmic immunostaining of the neoplastic cells (B), and positive cytoplasmic immunostaining of the bile duct epithelial cells (C).

Anti - C3d complement – rabbit clonal antibody

Cat. #:	DB106-0.1 (100 µl)	DB106-0.5 (500 µl)	DB106-RTU-7 (7 ml)
	DB106-0.2 (200 µl)	DB106-1 (1 ml)	DB106-RTU-15 (15 ml)

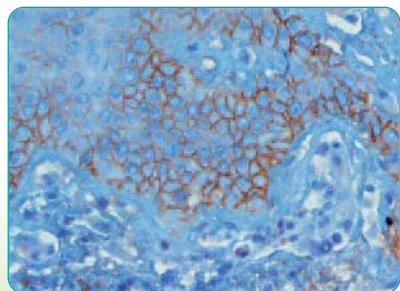
C3d is a fragment of C3 alpha chain of complement and plays the central role in complement activation process. Enhanced tissue expression of C3d relates to organ transplant rejection.

Product information

Clone:	E28-P	Specificity:	Human
Protein accession number:	P01024	Expiration:	24 months from the day of delivery

Immunogen: Peptide derived from N-terminal sequence of human C3

Application: IHC-P dilution 1:100 - 1:200; IHC-Fr application and dilution to be tested by the user



Formalin-fixed and paraffin-embedded human skin biopsy (4 µm) from lesion of the early pemphigus vulgaris (without blister formation), stained with anti-C3d complement (DB106) antibody shows strong positive intraepidermal intercellular immunostaining.

Anti - C4d complement – rabbit clonal antibody

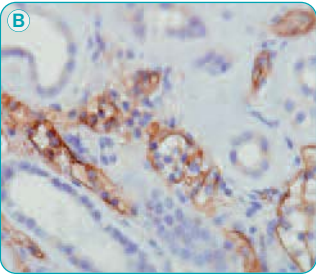
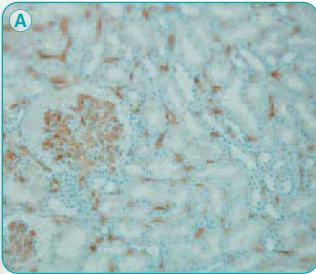
Cat. #:	DB107-0.1 (100 µl)	DB107-0.5 (500 µl)	DB107-RTU-7 (7 ml)
	DB107-0.2 (200 µl)	DB107-1 (1 ml)	DB107-RTU-15 (15 ml)

C4d is a split product of the complement C4 and its deposition serves as a sensitive and specific marker for antibody mediated rejection (AMR) of the transplanted organs. AMR is one of the most important adverse events after organ transplantation and if untreated, leads to significant graft loss. During AMR, C4d binds covalently to the target structures, which makes it easy to detect with corresponding antibodies. Currently, all renal transplant biopsies and biopsies from other organs as well, are required to stain with C4d antibody.

Product information

Clone:	A24-T	Specificity:	Human
Protein accession number:	POCOL4	Expiration:	24 months from the day of delivery

Immunogen: Peptide derived from internal sequence of human C4
Application: IHC-P dilution 1:100 - 1:200; IHC-Fr application and dilution to be tested by the user



Formalin-fixed and paraffin-embedded human transplanted kidney stained with anti-C4d complement (DB107) antibody shows diffuse strong positive immunostaining of peritubular and glomerular capillaries (A), indicating acute antibody mediated rejection and diffuse strong positive immunostaining of dilated peritubular moderate capillaries (B), indicating acute antibody mediated rejection.

Anti - PR (Progesterone receptor) – rabbit clonal antibody

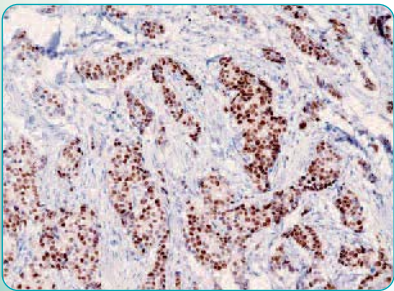
Cat. #:	DB108-0.1 (100 µl)	DB108-0.5 (500 µl)	DB108-RTU-7 (7 ml)
	DB108-0.2 (200 µl)	DB108-1 (1 ml)	DB108-RTU-15 (15 ml)

Intracellular steroid receptor of progesterone, which expression alterations are used in breast cancer diagnostics and prediction of related hormonal treatment.

Product information

Clone:	X22-C	Specificity:	Human
Protein accession number:	P06401	Expiration:	24 months from the day of delivery

Immunogen: Peptide derived from N-terminal region of human progesterone receptor
Application: IHC-P dilution 1:100 - 1:200; IHC-Fr application and dilution to be tested by the user



Formalin-fixed and paraffin-embedded human breast carcinoma tissue (4 µm) stained with anti-progesterone receptor (DB108) antibody shows strong positive nuclear immunostaining of tumor cells.

Anti - PR (Progesterone receptor) – rabbit clonal antibody

Cat. #:	DB109-0.1 (100 µl)	DB109-0.5 (500 µl)	DB109-RTU-7 (7 ml)
	DB109-0.2 (200 µl)	DB109-1 (1 ml)	DB109-RTU-15 (15 ml)

Intracellular steroid receptor of progesterone, which expression alterations are used in breast cancer diagnostics and prediction of related hormonal treatment.

Product information

Clone: A21-W

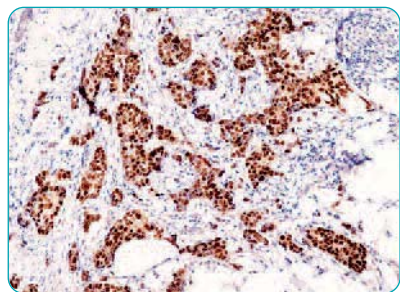
Protein accession number: P06401

Specificity: Human

Expiration: 24 months from the day of delivery

Immunogen: Peptide derived from the region close to the N-terminus of human progesterone receptor

Application: IHC-P dilution 1:100 - 1:200; IHC-Fr application and dilution to be tested by the user



Formalin-fixed and paraffin-embedded human breast carcinoma tissue (4 µm) stained with anti-progesterone receptor (DB109) antibody shows strong positive nuclear immunostaining of tumor cells.

Anti - Ki-67 – rabbit clonal antibody

Cat. #:	DB111-0.1 (100 µl)	DB111-0.5 (500 µl)	DB111-RTU-7 (7 ml)
	DB111-0.2 (200 µl)	DB111-1 (1 ml)	DB111-RTU-15 (15 ml)

Over-expression of Ki-67 is strictly associated with cell proliferation. Positivity of cell nuclei mostly correlates with the clinical course of different malignancies.

Product information

Clone: E18-E

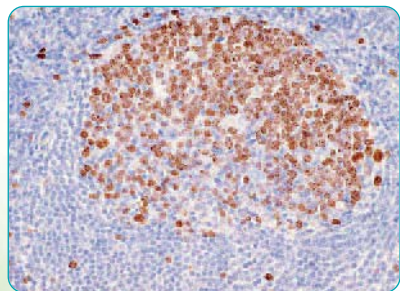
Protein accession number: P46013

Specificity: Human

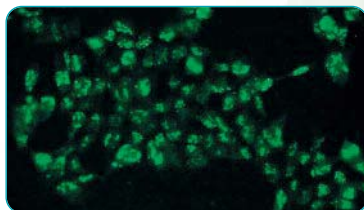
Expiration: 24 months from the day of delivery

Immunogen: Peptide derived from N-terminal region of human Ki-67

Application: IHC-P dilution 1:100 - 1:200; IHC-Fr application and dilution to be tested by the user



Formalin-fixed and paraffin-embedded human tonsil tissue (4 µm) stained with anti-Ki-67 (DB111) antibody shows strong and specific nuclear immunostaining of proliferating cells.



Representative picture of Ki-67 expression in HEK293 cells, visualized with clonal rabbit anti-Ki-67 monospecific antibody.

Anti - CD7 – rabbit clonal antibody

Cat. #: DB114-0.1 (100 µl)	DB114-0.5 (500 µl)	DB114-RTU-7 (7 ml)
DB114-0.2 (200 µl)	DB114-1 (1 ml)	DB114-RTU-15 (15 ml)

Transmembrane glycoprotein expressed on T-cells, NK-cells and some of hematopoietic cells. CD7 is a marker of early lymphoid development concerning the T- and B-cell interactions.

Product information

Clone: C21-Q

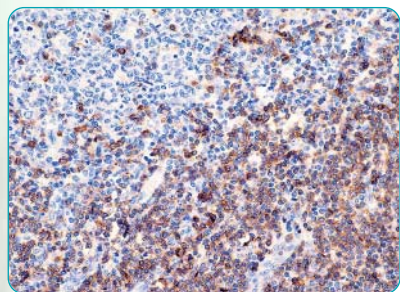
Protein accession number: P09564

Specificity: Human

Expiration: 24 months from the day of delivery

Immunogen: Peptide derived from C-terminal region of human CD7

Application: IHC-P dilution **1:100 - 1:300**; IHC-Fr application and dilution to be tested by the user



Formalin-fixed and paraffin-embedded human tonsil tissue (4 µm) stained with anti-CD7 antibody (DB114) shows strong immunostaining of T-lymphocytes.

Anti - Cytokeratin 20 – rabbit clonal antibody

Cat. #: DB119-0.1 (100 µl)	DB119-0.5 (500 µl)	DB119-RTU-7 (7 ml)
DB119-0.2 (200 µl)	DB119-1 (1 ml)	DB119-RTU-15 (15 ml)

CK20 is a low molecular weight acidic cytokeratin whose expression is tightly connected to gastric and intestinal epithelium, urothelium and Merkel cells of the skin. It is commonly found in colorectal cancer, Merkel cell tumors and transitional cell carcinomas.

Product information

Clone: E19-I

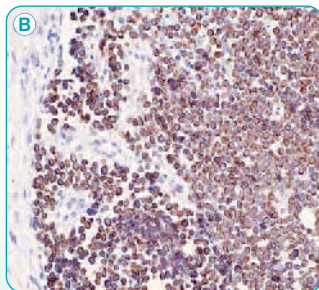
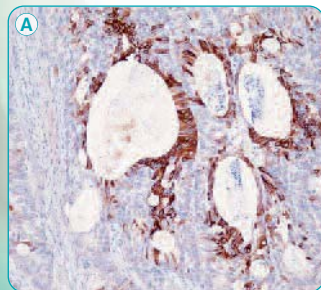
Protein accession number: P35900

Specificity: Human

Expiration: 24 months from the day of delivery

Immunogen: Peptide derived from C-terminal region of human Cytokeratin 20

Application: IHC-P dilution **1:100 - 1:200**; IHC-Fr dilution to be tested by the user



Formalin-fixed and paraffin-embedded human colon adenocarcinoma (A, 4 µm), and Merkel cell carcinoma (B, 4 µm), stained with anti-Cytokeratin 20 antibody (DB119) shows strong positive immunostaining of cancerous cells.

Anti - p63 – rabbit clonal antibody

Cat. #: DB134-0.1 (100 µl)	DB134-0.5 (500 µl)	DB134-RTU-7 (7 ml)
DB134-0.2 (200 µl)	DB134-1 (1 ml)	DB134-RTU-15 (15 ml)

P63/TP63 is a member of the p53 family of transcription factors expressed in the cell nucleus of a variety of tissues - heart, kidney, placenta, prostate, testis, tonsil, thymus and skeletal muscle. In cancer, p63 is expressed predominantly in basal cell and squamous cell carcinomas.

Product information

Clone: I27-I

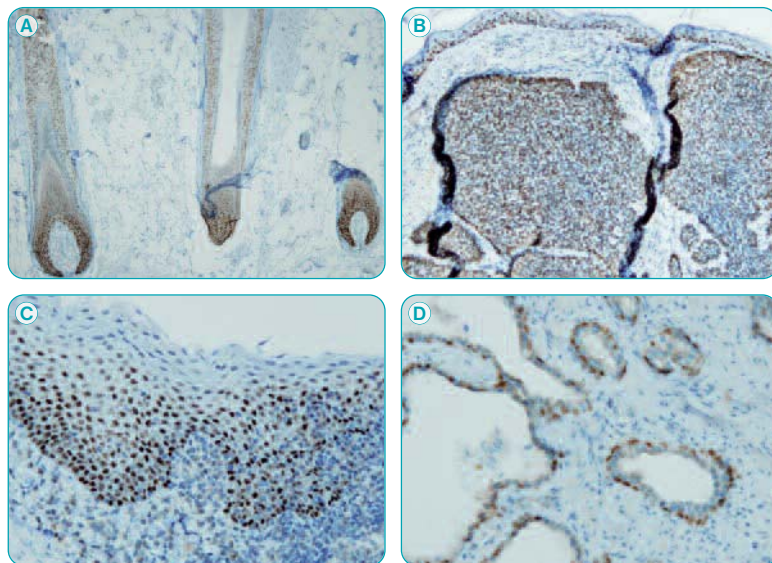
Protein accession number: Q9H3D4

Specificity: Human

Expiration: 24 months from the day of delivery

Immunogen: Peptide derived from the internal sequence of human p63

Application: IHC-P dilution 1:100 - 1:200; IHC-Fr dilution to be tested by the user



Nuclear expression of p63 visualized with DB134, anti-p63 antibody, clone I27-I, in: normal hair follicles (A), basal cell carcinoma of the skin (B) squamous epithelium of the tonsil (C) and basal cells of the prostatic glands (D).

Anti - p16 – rabbit clonal antibody

Cat. #: DB152-0.1 (100 µl)	DB152-0.5 (500 µl)	DB152-RTU-7 (7 ml)
DB152-0.2 (200 µl)	DB152-1 (1 ml)	DB152-RTU-15 (15 ml)

p16/INK4A/CDKN2A, cyclin-dependent kinase inhibitor 2A, is a tumor suppressor protein playing an important role in the regulation of cell cycles. Frequent mutations of p16 increase the risk of developing a variety of cancers, underlying its role in carcinogenesis. Overexpression of p16 is detected mostly in cervical cancer (squamous and glandular epithelial dysplasia), melanomas, head and neck squamous cell carcinomas.

Product information

Clone: R19-D

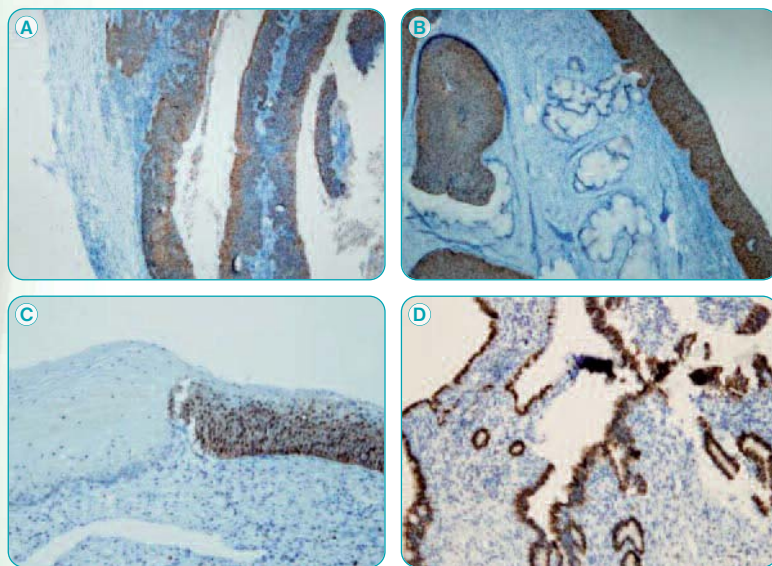
Protein accession number: P42771

Specificity: Human

Expiration: 24 months from the day of delivery

Immunogen: Peptide derived from C-terminal sequence of human p16

Application: IHC-P dilution 1:100; IHC-Fr dilution to be tested by the user



Formalin-fixed and paraffin-embedded human tissues (4µm) corresponding to: **A) Cervical lymph node metastasis of oropharyngeal HPV-associated squamous cell carcinoma; B) High grade squamous intraepithelial lesion of the uterine cervix, in contrast with normal endocervical glands; C) High grade squamous intraepithelial lesion of the uterine cervix, in contrast with non-dysplastic metaplastic squamous epithelium; D) Adenocarcinoma in situ of the uterine cervix, stained with anti-p16 (DB152), show strong and specific positive immunostaining of dysplastic and neoplastic epithelium, with no reactivity in normal epithelial and stromal structures.**

Anti - Synaptophysin – rabbit clonal antibody

Cat. #: DB156-0.1 (100 µl)	DB156-0.5 (500 µl)	DB156-RTU-7 (7 ml)
DB156-0.2 (200 µl)	DB156-1 (1 ml)	DB156-RTU-15 (15 ml)

Synaptophysin or major synaptic vesicle protein p38, is an integral membrane glycoprotein expressed in presynaptic vesicles of neurons and neuromuscular junctions. Its expression has been reported in wide spectrum of neuroendocrine tumors and neuroendocrine tumors of epithelial type - medullary carcinomas of thyroid, parathyroid adenomas, pituitary adenomas, neuroendocrine carcinomas of bronchopulmonary and gastrointestinal tract and neuroendocrine carcinomas of skin.

Product information

Clone: Q21-Q

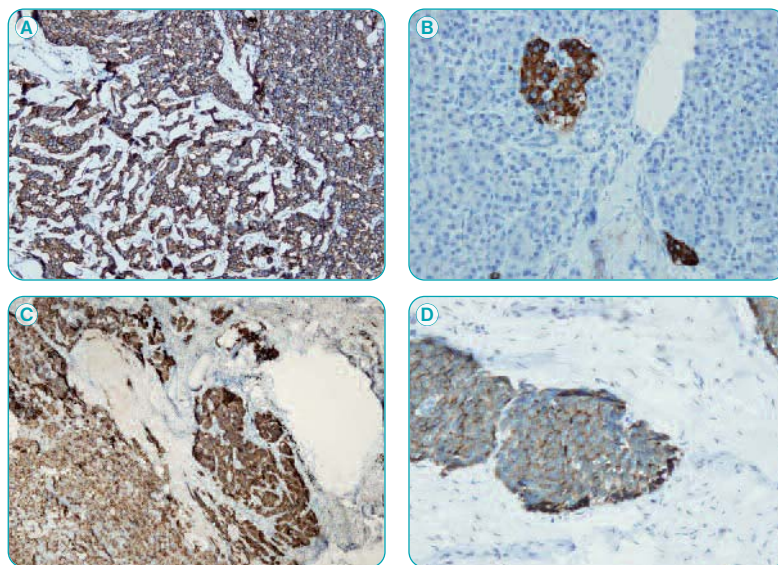
Protein accession number: P08247

Specificity: Human

Expiration: 24 months from the day of delivery

Immunogen: Peptide derived from C-terminal sequence of human synaptophysin

Application: IHC-P dilution 1:100 - 1:200; IHC-Fr dilution to be tested by the user



Cytoplasmic expression of synaptophysin (DB156) in: neuroendocrine tumor of the pancreas (NET, grade 1)(A), normal pancreatic islets of Langerhans (B), typical carcinoid of the lung (C) and neuroendocrine tumor of the small intestine (NET, grade 1)(D).

Anti - Chromogranin A – rabbit clonal antibody

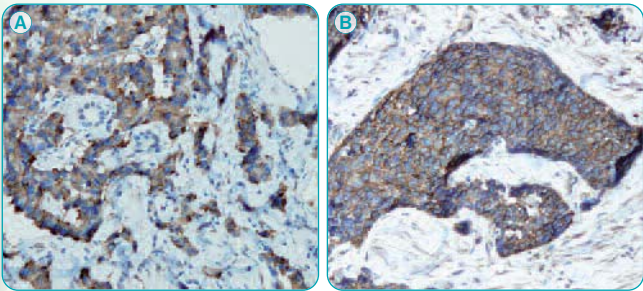
Cat. #:	DB157-0.1 (100 µl)	DB157-0.5 (500 µl)	DB157-RTU-7 (7 ml)
	DB157-0.2 (200 µl)	DB157-1 (1 ml)	DB157-RTU-15 (15 ml)

Chromogranin A is a major member of the family of acidic secretory glycoproteins, expressed in all endocrine and neuroendocrine cells. Chromogranin A expression has been detected in number of neuroendocrine tumors, including phaeochromocytomas, medullary thyroid carcinomas, pituitary adenomas and Merkel cell tumors.

Product information

Clone:	D25-R	Specificity:	Human
Protein accession number:	P10645	Expiration:	24 months from the day of delivery

Immunogen: Peptide derived from N-terminal sequence of human chromogranin A
Application: IHC-P dilution 1:100 - 1:200; IHC-Fr dilution to be tested by the user



Cytoplasmic expression of chromogranin A in: neuroendocrine tumor of the pancreas (NET, grade 1 **A**), and neuroendocrine tumor of the small intestine (NET, grade **B**), stained with anti-chromogranin A antibody (DB157).

Anti - Chromogranin A – rabbit clonal antibody

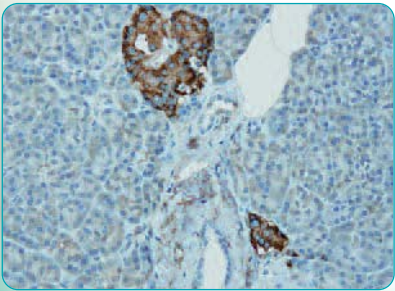
Cat. #:	DB158-0.1 (100 µl)	DB158-0.5 (500 µl)	DB158-RTU-7 (7 ml)
	DB158-0.2 (200 µl)	DB158-1 (1 ml)	DB158-RTU-15 (15 ml)

Chromogranin A is a major member of the family of acidic secretory glycoproteins, expressed in all endocrine and neuroendocrine cells. Chromogranin A expression has been detected in number of neuroendocrine tumors, including phaeochromocytomas, medullary thyroid carcinomas, pituitary adenomas and Merkel cell tumors.

Product information

Clone:	N28-A	Specificity:	Human
Protein accession number:	P10645	Expiration:	24 months from the day of delivery

Immunogen: Peptide derived from C-terminal sequence of human chromogranin A
Application: IHC-P dilution 1:100 - 1:200; IHC-Fr dilution to be tested by the user



Cytoplasmic expression of chromogranin A in normal pancreatic islets of Langerhans, stained with anti-chromogranin A antibody (DB158).

DETECTION SYSTEM

Description: DB Biotech's Detection System Rabbit / Mouse Dual – HRP, is a HRP (horseradish peroxidase) labeled micropolymer-based secondary antibody conjugate, designed for applications in immunohistochemistry. This Dual System detects separately rabbit or mouse immunoglobulins, or both bound to an antigen presented in the tissue or cell samples. The resulting background-free immunostaining is represented by a very high sensitivity of staining, detecting a small amount of target antigen with a labeled secondary antibody, containing high numbers of enzyme molecules.

Catalog No.	Product description	Volume
DB DET KIT - 50	DB Detection KIT - rabbit/mouse dual, HRP/DAB	50 ml
DB DET KIT - 100	DB Detection KIT - rabbit/mouse dual, HRP/DAB	100 ml
DB DET SYS	DB Detection system rabbit/mouse dual - HRP	100 ml
DB D - 50	DB Primary Antibody diluent	50 ml
DB D - 125	DB Primary Antibody diluent	125 ml
DB D - 250	DB Primary Antibody diluent	250 ml
DB Retcit - 250	DB Antigen retrieval solution, pH 6, 10xconcentrated	250 ml
DB Retcit - 500	DB Antigen retrieval solution, pH 6, 10xconcentrated	500 ml
DB Retris - 250	DB Antigen retrieval solution, pH 9, 10xconcentrated	250 ml
DB Retris - 500	DB Antigen retrieval solution, pH 9, 10xconcentrated	500 ml

Anti - Actin – rabbit clonal antibody

Cat. #: DB001-0.05 (50 µl)
DB001-0.1 (100 µl)

Homogenous immunoglobulin fraction characterizing the major epitope of alpha- and beta-actin located on the C-terminal conserved region of protein. This antibody is used to study the intracellular distribution of actin, quantitative detection and interaction with other cellular proteins.

Product information

Clone: S12-I

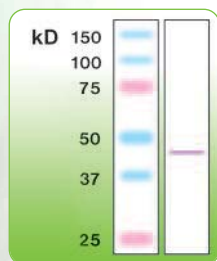
Specificity: All mammalian species

Protein accession number: P60709, P60710, P60711

Expiration: 24 months from the day of delivery

Immunogen: Peptide derived from C-terminal sequence of human β -actin

Application: Western blot, Immunoprecipitation, ELISA, Immunohistochemistry (frozen sections, fixed, paraffin-embedded sections)



Anti-Actin (DB001)

Western blot of actin in mouse brain crude lysate (50 µg of protein loaded).

Anti - p53 – rabbit clonal antibody

Cat. #: DB002-0.05 (50 µl)
DB002-0.1 (100 µl)

Clonal highly purified immunoglobulin recognizing a major C-terminal epitope of tumor suppressor protein p53. A very useful antibody for detection, quantification and in cell localization studies of p53. Strongly recommended for use in p53 interaction proteins studies under different stimuli.

Product information

Clone: S11-K

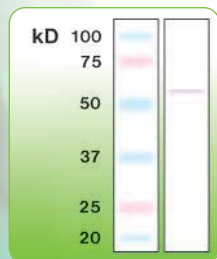
Specificity: Human, mouse, rat

Protein accession number: P04637, P10361, P02340

Expiration: 24 months from the day of delivery

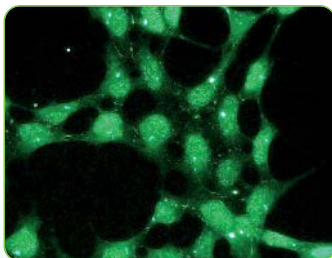
Immunogen: Peptide derived from C-terminal peptide of human p53

Application: Western blot (transfer to PVDF membrane is recommended), Immunoprecipitation, ELISA, Immunohistochemistry (frozen sections, fixed, paraffin-embedded sections)



Anti-p53 (DB002)

Western blot of p53 in mouse brain crude lysate (50 µg of protein loaded).



Representative picture of p53 expression in HEK293 cells, visualized with clonal rabbit anti-p53 monospecific antibody.

Anti - iNOS – rabbit clonal antibody

Cat. #: DB003-0.05 (50 µl)
DB003-0.1 (100 µl)

Immunoglobulin fraction recognizing primarily inducible form of nitric oxide synthase (NOS). May cross-react with two other forms of NOS-endothelial (eNOS) and neuronal or brain (nNOS or bNOS).

Product information

Clone: K13-A

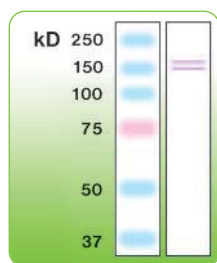
Specificity: Human, mouse, rat

Protein accession number: P35228 (P29475),
Q06518, P29477

Expiration: 24 months from the day of delivery

Immunogen: Peptide derived from the human iNOS sequence

Application: Western blot, Immunoprecipitation, ELISA, Immunohistochemistry
(frozen sections, fixed, paraffin-embedded sections)



Anti-iNOS (DB003)

Western blot of i(n) NOS in mouse brain
crude lysate (50 µg of protein loaded).

Anti - Interferon-γ – rabbit clonal antibody

Cat. #: DB004-0.05 (50 µl)
DB004-0.1 (100 µl)

Gamma-Interferon is a pleiotropic cytokine involved in inflammatory responses and activation, differentiation and growth of many cell types including T and B lymphocytes or endothelial cells. Quantification of its release during viral infections or different inflammatory processes related to cell-mediated immunity can be accomplished only with a very sensitive and specific antibody.

Product information

Clone: K14-B

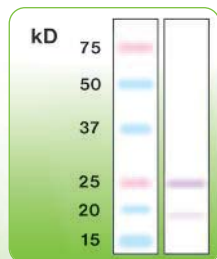
Specificity: Human, mouse, rat

Protein accession number: P01579, P01581, P01580

Expiration: 24 months from the day of delivery

Immunogen: Peptide derived from C-terminal peptide of human Interferon-γ

Application: Western blot, Immunoprecipitation, ELISA



Anti-Interferon-γ (DB004)

Western blot of Interferon-γ in serum (100
µg of total protein) of multiple sclerosis pa-
tient -relapse.

Anti - PKC- α – rabbit clonal antibody

Cat. #: DB005-0.05 (50 μ l)
DB005-0.1 (100 μ l)

Conventional PKC isoform which serves as an important regulator of multiple signalling pathways in cells, including cancer and diabetes. Its activity in different sub-cellular compartments of living cells may be quantified by using a specific antibody recognizing strictly this isoform. Clonal PKC α antibody is mapping unique and well conserved epitope of this kinase isoform.

Product information

Clone: G13-R

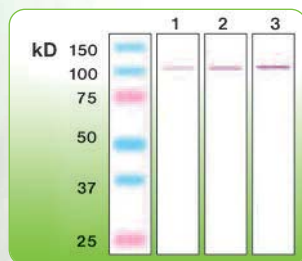
Specificity: Human, mouse, rat

Protein accession number: P17252, P05696, P20444

Expiration: 24 months from the day of delivery

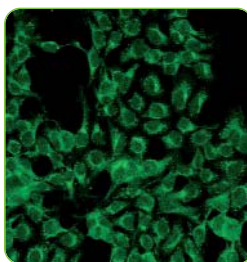
Immunogen: Peptide derived from the human PKC- α sequence

Application: Western blot, Immunoprecipitation, ELISA, Immunohistochemistry
(frozen sections, fixed, paraffin-embedded sections)



Anti-PKC- α (DB005)

Western blot of Anti-PKC- α :
lane 1 - 50 ng; lane 2 - 100
ng; lane 3 - 200 ng of re-
combinant human PKC- α
(N-tem GST PKC- α ; SE494-
0005; MW=103kDa).



Representative pic-
ture of PKC- α expres-
sion in HEK293 cells,
visualized with clonal
rabbit anti-PKC- α mo-
nospecific antibody.

Anti - PKC- β I – rabbit clonal antibody

Cat. #: DB006-0.05 (50 μ l)
DB006-0.1 (100 μ l)

Clonal antibody mapping strictly a major C-terminal epitope of this PKC isoform playing an important regulatory role in T-cell migration.

Product information

Clone: A10-F

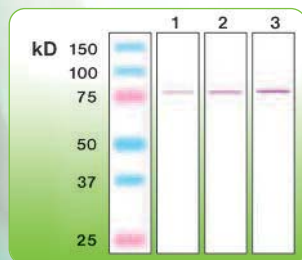
Specificity: Human, mouse, rat

Protein accession number: P05771, P68403, P68404

Expiration: 24 months from the day of delivery

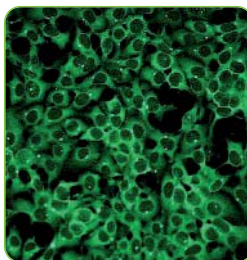
Immunogen: Peptide derived from the human PKC- β I sequence

Application: Western blot, Immunoprecipitation, ELISA, Immunohistochemistry
(frozen sections, fixed, paraffin-embedded sections)



Anti-PKC- β I (DB006)

Western blot of Anti-PKC- β I:
lane 1 - 50 ng; lane 2 - 100
ng; lane 3 - 200
ng of human recombi-
nant PKC- β I; ENZO, SE-
144; MW=76.8kDa.



Representative pic-
ture of PKC- β I ex-
pression in HEK293
cells, visualized with
clonal rabbit anti-
PKC- β I monospeci-
fic antibody.

Anti - PKC- β II – rabbit clonal antibody

Cat. #: DB007-0.05 (50 μ l)
DB007-0.1 (100 μ l)

A high homology with PKC β II due to a single gene splicing gives a very limited possibility for a specific antibody design. In-vitro clonal technology is introducing a homogenous fraction of IgGs recognizing specifically this isoform of kinase.

Product information

Clone: N11-S

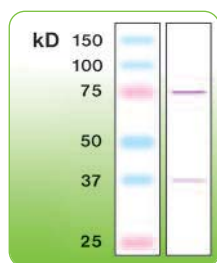
Protein accession number: P05771-2, P68403-2

Specificity: Human, mouse, rat

Expiration: 24 months from the day of delivery

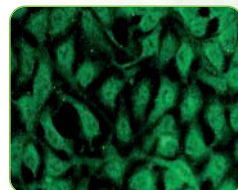
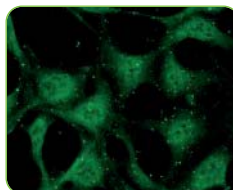
Immunogen: Peptide derived from the human PKC- β II sequence

Application: Western blot, Immunoprecipitation, ELISA, Immunohistochemistry (frozen sections, fixed, paraffin-embedded sections)



Anti-PKC- β II (DB007)

Western blot of PKC- β II in mouse brain crude lysate (50 μ g of protein loaded).



Representative pictures of PKC- β II expression in HEK293 cells, visualized with clonal rabbit anti-PKC- β II monospecific antibody.

Anti - PKC- γ – rabbit clonal antibody

Cat. #: DB008-0.05 (50 μ l)
DB008-0.1 (100 μ l)

Mostly brain and spinal cord specific isoform of PKC playing many important roles in signalling pathways in neuronal and related cells.

Product information

Clone: A12-H

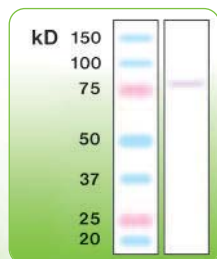
Protein accession number: P05129, P63319, P63318

Specificity: Human, mouse, rat

Expiration: 24 months from the day of delivery

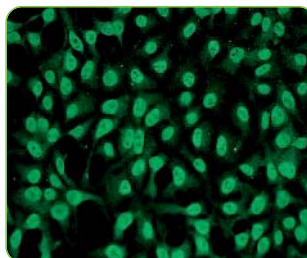
Immunogen: Peptide derived from the human PKC- γ sequence

Application: Western blot, Immunoprecipitation, ELISA, Immunohistochemistry (frozen sections, fixed, paraffin-embedded sections)



Anti-PKC- γ (DB008)

Western blot of PKC- γ in mouse brain crude lysate (200 μ g of protein loaded).



Representative picture of PKC- γ expression in HEK293 cells, visualized with clonal rabbit anti-PKC- γ monospecific antibody.

Anti - PKC- δ – rabbit clonal antibody

Cat. #: DB009-0.05 (50 μ l)
DB009-0.1 (100 μ l)

Novel PKC isoform intensively studied in cancer. Clonal antibody specifically recognizing PKC δ is an important tool in mapping its physiological activity.

Product information

Clone: K15-K

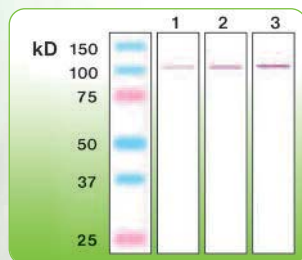
Protein accession number: Q05655, P09215, P28867

Specificity: Human, mouse, rat

Expiration: 24 months from the day of delivery

Immunogen: Peptide derived from the human PKC- δ sequence

Application: Western blot, Immunoprecipitation, ELISA, Immunohistochemistry (frozen sections, fixed, paraffin-embedded sections)



Anti-PKC- δ (DB009)

Western blot of PKC- δ :
lane 1 - 100 ng; lane 2 -
200 ng; lane 3 - 500 ng
of human recombinant
N-term GST PKC- δ ; ENZO;
SE-346; MW=104kDa).

Anti - PKC- ϵ – rabbit clonal antibody

Cat. #: DB010-0.05 (50 μ l)
DB010-0.1 (100 μ l)

Besides of other important roles, PKC epsilon is involved in neuronal death induced by oxidative stress. Specific clonal characterization of the epitope at the N-terminal part of PKC ϵ sequence allows its unique detection.

Product information

Clone: G13-X

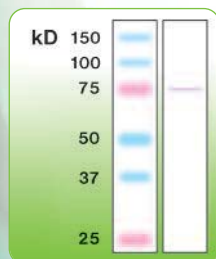
Protein accession number: Q02156, P09216, P16054

Specificity: Human, mouse, rat

Expiration: 24 months from the day of delivery

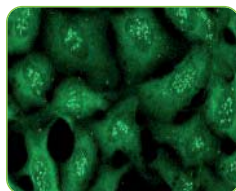
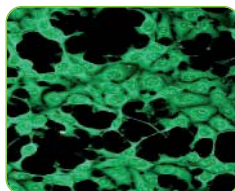
Immunogen: Peptide derived from the human PKC- ϵ sequence

Application: Western blot (transfer to PVDF membrane is recommended), Immunoprecipitation, ELISA, Immunohistochemistry (frozen sections, fixed, paraffin-embedded sections)



Anti-PKC- ϵ (DB010)

Western blot of PKC- ϵ in
mouse brain crude lysate
(50 μ g of protein loaded).



Representative pictures of PKC- ϵ expression in HEK293 cells,
visualized with clonal rabbit anti-PKC- ϵ monospecific antibody.

Anti - PKC- ζ – rabbit clonal antibody

Cat. #: DB011-0.05 (50 μ l)
DB011-0.1 (100 μ l)

Atypical PKC isoform involved in regulation of multiple cellular events. Present in the nucleus of the cell, it is involved in phosphorylation of many nuclear substrates. PKC ζ plays a role in the regulation of activity and subcellular distribution of MAP kinases and their related interactors. A clonal antibody detecting specifically this isoform of PKC may be very useful in cell biology studies and related molecular characterization of signalling pathways.

Product information

Clone: R14-K

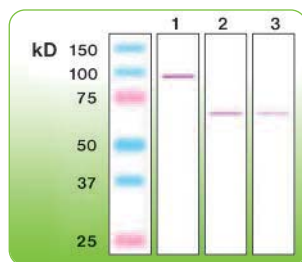
Protein accession number: Q05513, P09217, Q02956

Specificity: Human, mouse, rat

Expiration: 24 months from the day of delivery

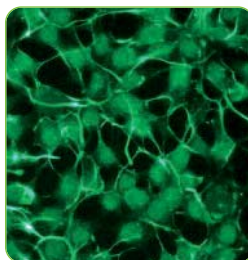
Immunogen: Peptide derived from the human PKC- ζ sequence

Application: Western blot, Immunoprecipitation, ELISA, Immunohistochemistry (frozen sections, fixed, paraffin-embedded sections)



Anti-PKC- ζ (DB011)

Western blot of PKC- ζ : lane 1 – 50ng of recombinant human PKC- ζ (N-term GST PKC- ζ BML-SE443-0005); lane 2 – mouse brain crude protein lysate (100 μ g); lane 3 – rat brain crude protein lysate (100 μ g).



Representative picture of PKC- ζ expression in HEK293 cells, visualized with clonal rabbit anti-PKC- ζ monospecific antibody.

Anti - Erk 1,2 – rabbit clonal antibody

Cat. #: DB012-0.05 (50 μ l)
DB012-0.1 (100 μ l)

Clonal antibody representing both, Erk1 and Erk2, obtained from immunoaffinity purified immunoglobulins corresponding to unique epitope for both kinases.

Product information

Clone: B20-U

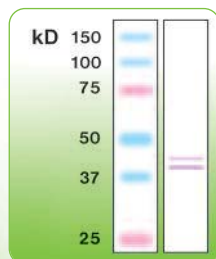
Protein accession number: P28482, P63086, P63085

Specificity: Human, mouse, rat

Expiration: 24 months from the day of delivery

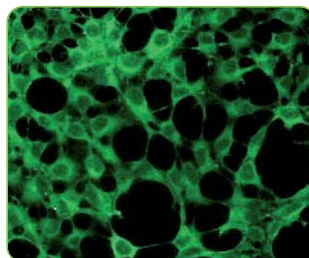
Immunogen: Peptide derived from C-terminal peptide of human Erk 2

Application: Western blot, Immunoprecipitation, ELISA



Anti-Erk 1,2 (DB012)

Western blot of Erk 1,2 in rat brain crude lysate (100 μ g of protein loaded).



Representative picture of Erk1,2 expression in HEK293 cells, visualized with clonal rabbit anti-Erk1,2 monospecific antibody.

Anti - Phospho-Erk 1,2 – rabbit clonal antibody

Cat. #: DB013-0.05 (50 µl)
DB013-0.1 (100 µl)

Major clone of IgGs representing both, Erk1 and Erk2, obtained from immunoaffinity purified immunoglobulins corresponding to pT-E-pY dual phosphorylation sequence. Phosphorylated Erk1,2 is a prominent target in the early diagnosis and treatment of cancer.

Product information

Clone: G15-B

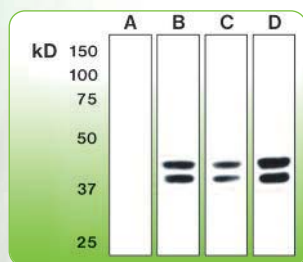
Specificity: Human, mouse, rat

Protein accession number: P28482, P63086, P63085

Expiration: 24 months from the day of delivery

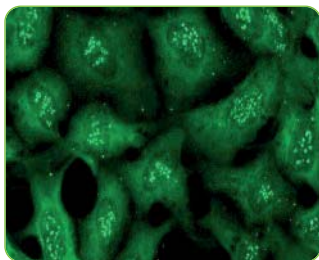
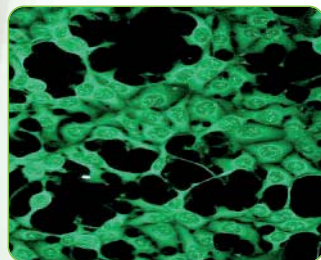
Immunogen: Peptide derived from the protein area including conserved pT-E-pY motif of activated Erk 1,2

Application: Western blot, Immunoprecipitation, ELISA, Immunohistochemistry
(frozen sections, fixed, paraffin-embedded sections)



Anti-Phospho-Erk 1,2 (DB013)

Western blot analysis of Erk 1,2 activation in untreated PC12 cells (A), cells treated with EGF-100ng/ml, 5min (B), PMA-100nM, 30min (C) in serum free DMEM, and EGF-100ng/ml, 5min with 10% FBS in DMEM (D). Wells were equally loaded with 50µg of whole cell lysate proteins/well.



Representative pictures of phospho-Erk1,2 expression in HEK293 cells, (picture A - untreated cells, picture B - hydrogen peroxide treated cells) visualized with clonal rabbit anti-phospho-Erk1,2 monospecific antibody.

Anti - Metallothionein – rabbit clonal antibody

Cat. #: DB014-0.05 (50 µl)
DB014-0.1 (100 µl)

Metallothionein clonal antibody designed to the epitope present at the N-terminus, covers following isoform of human protein: 1A, B, E, F, G, H, I, L, M, Q, S, Y, and 2A. The antibody may be used for detection of some metallothionein isoforms expressed in other mammalian species.

Product information

Clone: N11-G

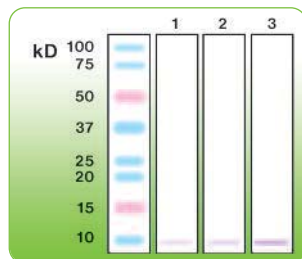
Protein accession number: #1A P04731, #1B P07438, #1E P04732, #1F P04733, #1G P13640, #1H P80294, #1I P80295, #1L Q93083, #1M Q8N339, #1Q Q86YX0, #1S Q86YX5, #1Y Q8TDC4, #2A P18055

Specificity: Human-tested, some other mammalian species metallothionein isoforms

Expiration: 24 months from the day of delivery

Immunogen: Peptide corresponding to the N-terminal sequence of human metallothionein (covering isoforms 1A, B, E, F, G, H, I, L, M, Q, S, Y, 2A)

Application: Western blot ELISA



Anti-Metallothionein (DB014)

Western blot of metallothionein from rabbit liver (Alexis biochemicals; cat #: ALX-202-071-C500). Lane 1 – 1 µg; Lane 2 – 3 µg; Lane 3 – 5 µg of protein loaded.

Anti - Nephrin – rabbit clonal antibody

Cat. #: DB017-0.05 (50 µl)
DB017-0.1 (100 µl)

Nephrin is an important functional component of the structurally unresolved molecular filter in renal glomerular capillaries. Its physiological dysregulation or changes of expression may cause severe proteinuria and loss of the slit diaphragm. This rabbit clonal antibody represents the fraction of IgG produced to sequence derived from the centre of the fifth Ig-like domain of human nephrin (between the residues Cys456-Cys528).

Product information

Clone: Y17-R

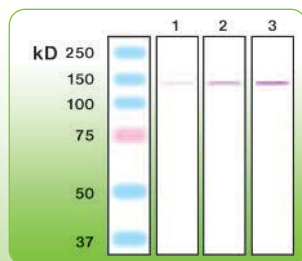
Protein accession number: O60500, Q9R044, Q9QZS7

Specificity: Human, mouse, rat

Expiration: 24 months from the day of delivery

Immunogen: Peptide derived from the centre of the fifth Ig-like domain of human nephrin (between residues Cys465-Cys528)

Application: Western blot, ELISA, Immunoprecipitation, Immunohistochemistry (IHC-P)



Anti-Nephrin (DB017)

Western blot analysis of mouse nephrin: lane 1 – 50ng; lane 2 – 100ng; lane 3 – 200ng of recombinant mouse nephrin (extracellular domain, Gln 37 – Thr 1049; cat. #: 3159/NN, R&D systems).

Anti - CTRP5 – rabbit clonal antibody

Cat. #: DB018-0.05 (50 µl)
DB018-0.1 (100 µl)

This antibody recognizes strictly the C-terminal sequence of human and mouse CTRP5 (adiponectin paralogue; Complement C1q, Tumor necrosis factor α-Related Protein 5).

Product information

Clone: A14-A

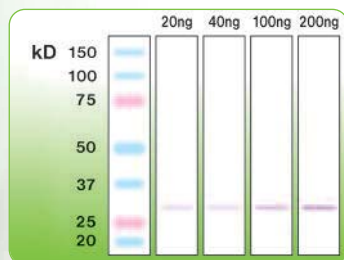
Protein accession number: Q9BXJ0, Q8K479

Specificity: Human, mouse

Expiration: 24 months from the day of delivery

Immunogen: Peptide close to the amino terminus of human CTRP5

Application: Western blot, ELISA



Anti-CTRP5 (DB018)

Western blot of mouse recombinant CTRP5 (Alexis Biochemicals; product number: ALX-522-102).

Anti - CTRP7 – rabbit clonal antibody

Cat. #: DB019-0.05 (50 µl)
DB019-0.1 (100 µl)

This clone recognizes the epitope close to the C-terminus of human and mouse CTRP7 (adiponectin paralogue; Complement C1q, Tumor necrosis factor α-Related Protein 7).

Product information

Clone: K14-S

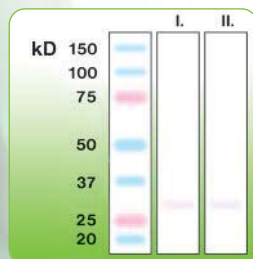
Protein accession number: Q9BXJ2, Q8BVD7

Specificity: Human, mouse

Expiration: 24 months from the day of delivery

Immunogen: Peptide from near the carboxy terminus of human CTRP7

Application: Western blot, ELISA



Anti-CTRP7 (DB019)

Western Blot of CTRP7 in rat (I.) and mouse (II.) brain crude lysates (200 µg of total protein loaded).

Anti - Trypsin – rabbit clonal antibody

Cat. #: DB022-0.05 (50 µl)
DB022-0.1 (100 µl)

Clonal antibody mapping the N-terminal sequence of human pancreatic cationic trypsin.

Product information

Clone: A16-N

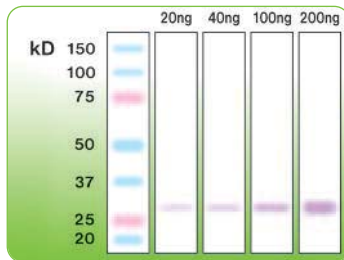
Specificity: Human

Protein accession number: P07477

Expiration: 24 months from the day of delivery

Immunogen: Peptide derived from near the N terminus of human pancreatic cationic trypsin

Application: Western blot, ELISA



Anti-Trypsin (DB022)

Western blot of human trypsin (Acris Antibodies GmbH; Trypsin-human pancreas; product number: BA630).

Anti - Trypsin – rabbit clonal antibody

Cat. #: DB023-0.05 (50 µl)
DB023-0.1 (100 µl)

Clonal antibody recognizing the epitope within the C-terminal sequence of human pancreatic cationic trypsin.

Product information

Clone: G15-J

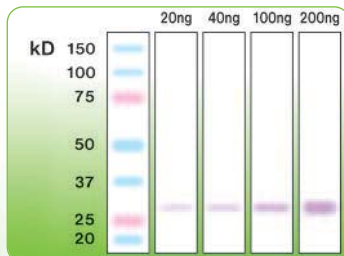
Specificity: Human

Protein accession number: P07477

Expiration: 24 months from the day of delivery

Immunogen: Peptide derived from near the C terminus of human pancreatic cationic trypsin

Application: Western blot, Immunoprecipitation, ELISA



Anti-Trypsin (DB023)

Western blot of human trypsin (Acris Antibodies GmbH; Trypsin-human pancreas; product number: BA630).

Anti - Nephrin – rabbit clonal antibody

Cat. #: DB024-0.05 (50 µl)
DB024-0.1 (100 µl)

This clone of anti-nephrin rabbit clonal antibody was produced to the epitope localized in the region of first Ig-like domain of nephrin protein (Cys53-Cys101).

Product information

Clone: G17-H

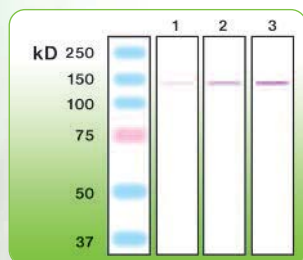
Specificity: Human, ovine, bovine, mouse, rat

Protein accession number: O60500, Q9R044, Q9QZS7

Expiration: 24 months from the day of delivery

Immunogen: Peptide derived from the region near C terminus of first Ig-like domain of human nephrin (between residues Cys53-Cys101)

Application: Western blot, Immunoprecipitation, ELISA



Anti-Nephrin (DB024)

Western blot analysis of mouse nephrin: lane 1 – 50ng; lane 2 – 100ng; lane 3 – 200ng of recombinant mouse nephrin (extracellular domain, Gln 37 – Thr 1049; cat. #: 3159/NN, R&D systems).

Anti - Prion – rabbit clonal antibody

Cat. #: DB033-0.05 (50 µl)
DB033-0.1 (100 µl)

This anti-prion antibody (anti-Pr^{Sc}) recognizes the prion protein molecule. The corresponding epitope is placed at the N-terminus of human prion protein, just before the first octapeptide sequence repeat. Although the antibody was tested for the detection of native prion protein (in human, ovine, bovine, mouse and rat samples), it may capture the PrP^{Sc} protein as well, which should be further evaluated by the potential end user.

Product information

Clone: T16-R

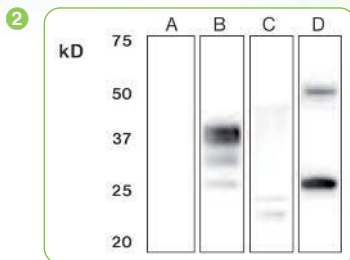
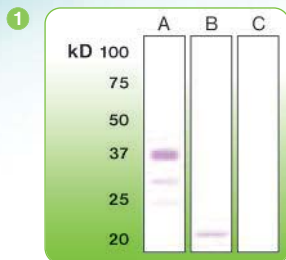
Specificity: Human, ovine, bovine, mouse, rat

Protein accession number: P04156

Expiration: 24 months from the day of delivery

Immunogen: Peptide derived from N-terminal peptide of human prion protein, just before the first octapeptide sequence repeat

Application: Western blot, Immunoprecipitation, ELISA, Immunohistochemistry (frozen sections, fixed, paraffin-embedded sections)



Anti-Prion (DB033)

1. Western blot analysis of prion protein in mouse brain extract (A), HEK293 cells producing recombinant human prion protein (B), and cells transfected with empty vector (C). 200 μ g of total protein loaded per well.
2. Lanes A-C represent extracts (30 μ g of total protein per lane) of PrP-KO CF-10 cells (A), mouse hippocampus (B) and HEK293 cells, transfected with mouse prion protein bearing 3F4 epitope (C); lane D corresponds to 30 ng recombinant MoPrP.

Anti - Prion – rabbit clonal antibody

Cat. #: DB080-0.05 (50 μ l)
DB080-0.1 (100 μ l)

This antibody recognizes the epitope from the middle of the second alpha-helical domain of human prion protein. Based on the structural parameters and the antibody design, this epitope is recognized mostly in PrP^{Sc} proteins. However, the PrP^C is generally recognized as well, in human, bovine, rat and mouse samples.

Product information

Clone: V21-V

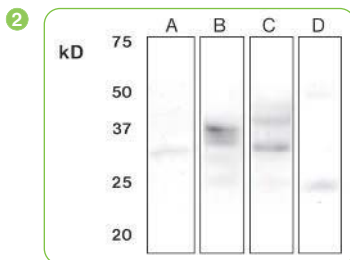
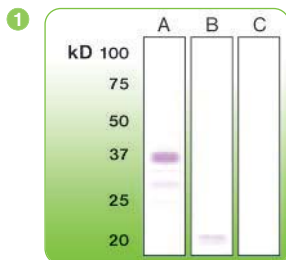
Specificity: Human, bovine, mouse, rat

Protein accession number: P04156

Expiration: 24 months from the day of delivery

Immunogen: Peptide derived the middle of the second α -helical domain of human prion protein

Application: Western blot, Immunoprecipitation, ELISA, Immunohistochemistry
(frozen sections, fixed, paraffin-embedded sections)



Anti-Prion (DB080)

1. Western blot analysis of prion protein in mouse brain extract (A), HEK293 cells producing recombinant human prion protein (B), and untransfected HEK293 cells (C). 200 μ g of total protein loaded per well.
2. Lanes A-C represent extracts (30 μ g of total protein per lane) of PrP-KO CF-10 cells (A), mouse hippocampus (B) and HEK293 cells, transfected with mouse prion protein bearing 3F4 epitope (C); lane D corresponds to 30 ng recombinant MoPrP.

Anti - Prion – rabbit clonal antibody

Cat. #: DB081-0.05 (50 µl)
DB081-0.1 (100 µl)

The epitope recognized by this monospecific antibody is placed at the end of third alpha-helical domain of human prion protein. Antibody recognizes predominantly the PrP^C molecule, with the potential in detection of structurally transformed forms of prion protein in human, ovine, bovine and mouse biological samples.

Product information

Clone: C16-S

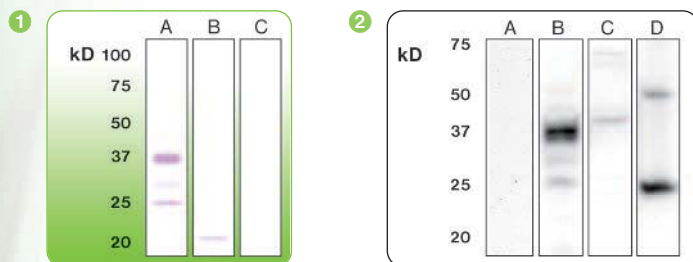
Protein accession number: P04156

Specificity: Human, ovine, bovine, mouse

Expiration: 24 months from the day of delivery

Immunogen: Peptide derived the C-terminus of third α-helical domain of human prion protein

Application: Western blot, Immunoprecipitation, ELISA, Immunohistochemistry
(frozen sections, fixed, paraffin-embedded sections)



Anti-Prion (DB081)

1. Western blot analysis of prion protein in mouse brain extract (A), HEK293 cells producing recombinant human prion protein (B), and untransfected HEK293 cells (C). 200 µg of total protein loaded per well.
2. Lanes A-C represent extracts (30 µg of total protein per lane) of PrP-KO CF-10 cells (A), mouse hippocampus (B) and HEK293 cells, transfected with mouse prion protein bearing 3F4 epitope (C); lane D corresponds to 30 ng recombinant MoPrP.

Anti - BAX – rabbit clonal antibody

Cat. #: DB123-0.05 (50 µl)
DB123-0.1 (100 µl)

This monospecific antibody detects the human, mouse, and rat bax protein, characterized by the same epitope placed within the N-terminal sequence. Bax expression, mostly associated with apoptosis promotion, has been extensively studied in connection with cancer cells responses to chemotherapeutic drugs.

Product information

Clone: G26-R

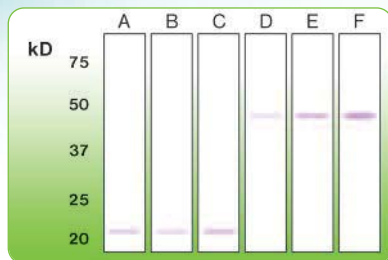
Protein accession number: Q07812

Specificity: Human, mouse, rat

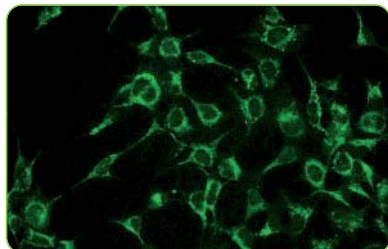
Expiration: 24 months from the day of delivery

Immunogen: Peptide derived from the N-terminal sequence of human bax

Application: Western blot, Immunoprecipitation, ELISA, Immunohistochemistry
(frozen sections, fixed, paraffin-embedded sections)

**Anti-Bax (DB123)**

Western blot analysis of bax protein in mouse brain extract (A), rat brain extract (B), HEK293 cells (C) – 200 µg of total protein loaded per well. GST-fusion recombinant human bax protein was tested under the same conditions at the concentrations of 100ng (D), 200ng (E), and 500ng (F).



Representative picture of Bax expression in HEK293 cells, visualized with clonal rabbit anti-Bax monospecific antibody.

Anti - Bcl-2 – rabbit clonal antibody

Cat. #: DB132-0.05 (50 µl)
DB132-0.1 (100 µl)

Bcl-2 family of proteins with pro- or anti-apoptotic activities have been studied for their crucial role in the regulation of apoptosis, tumor genesis and cellular response to cancer therapies.

Product information

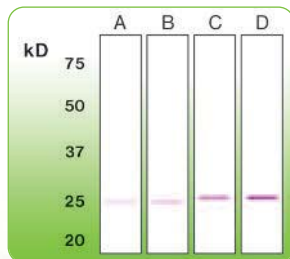
Clone: P22-A

Protein accession number: P10415

Specificity: Human, mouse, rat
Expiration: 24 months from the day of delivery

Immunogen: Peptide derived from the N-terminal sequence of human bcl-2

Application: Western blot, Immunoprecipitation, ELISA, Immunohistochemistry (ICC, frozen sections, fixed, paraffin-embedded sections)

**Anti-Bcl-2 (DB132)**

Western blot analysis of bcl-2 protein in protein extract from HEK293 cells (A), 100 µg (B), 200 µg of total protein loaded. His6 tag-fusion recombinant human bcl-2 protein (BioPioneer, cat#: HRP-0016) was tested under the same conditions at the concentrations of 100 ng (C), 200 ng (D).

Anti - PKC- α FITC – rabbit clonal antibody

Cat. #: DB1001 (100 tests)

Conventional PKC isoform which serves as an important regulator of multiple signaling pathways involved in cancer and diabetes.

Product information

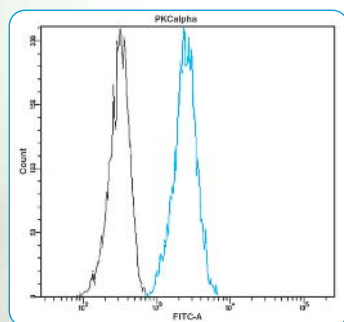
Clone: D22-G

Isotype: Rabbit IgG

Reactivity: Human

Expiration: 24 months from the day of delivery

Preparation: The antibody was prepared by in-vitro cloning technology, and the monospecific product was conjugated with FITC under optimal conditions. The solution is free of unconjugated FITC and unconjugated antibody.



Profile of peripheral blood lymphocytes analyzed by the BD FACSCanto II.

Cells were fixed, permeabilized and stained with anti-human PKC- α FITC (blue, used 10 μ l per test) or with an isotype control (black).

Anti - PKC- β I FITC – rabbit clonal antibody

Cat. #: DB1002 (100 tests)

Clonal antibody mapping strictly a unique epitope of this PKC isoform playing an important regulatory role in T-cell migration. Detected in T and B cells expressed at different levels of expression.

Product information

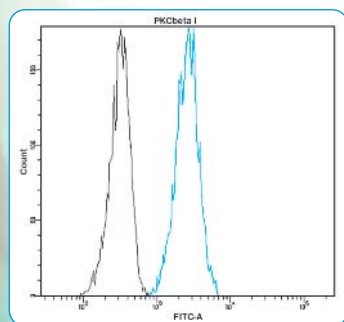
Clone: N20-N

Isotype: Rabbit IgG

Reactivity: Human

Expiration: 24 months from the day of delivery

Preparation: The antibody was prepared by in-vitro cloning technology, and the monospecific product was conjugated with FITC under optimal conditions. The solution is free of unconjugated FITC and unconjugated antibody.



Profile of peripheral blood lymphocytes analyzed by the BD FACSCanto II.

Cells were fixed, permeabilized and stained with anti-human PKC- β I FITC (blue, used 10 μ l per test) or with an isotype control (black).

Anti - PKC- β II FITC – rabbit clonal antibody

Cat. #: DB1003 (100 tests)

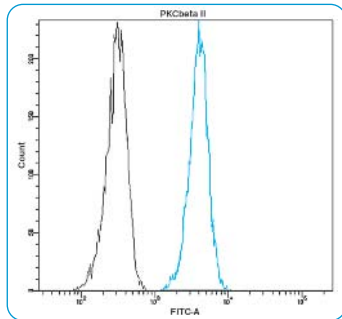
A high homology with PKC β II due to a single gene splicing gives a very limited possibility for a specific antibody design. In-vitro clonal technology is introducing a homogenous fraction of IgGs recognizing specifically this isoform of kinase also in the blood cells.

Product information

Clone: Q19-V
Isotype: Rabbit IgG

Reactivity: Human
Expiration: 24 months from the day of delivery

Preparation: The antibody was prepared by in-vitro cloning technology, and the monospecific product was conjugated with FITC under optimal conditions. The solution is free of unconjugated FITC and unconjugated antibody.



Profile of peripheral blood lymphocytes analyzed by the BD FACSCanto II.

Cells were fixed, permeabilized and stained with anti-human PKC- β II FITC (blue, used 10 μ l per test) or with an isotype control (black).

Anti - PKC- γ FITC – rabbit clonal antibody

Cat. #: DB1004 (100 tests)

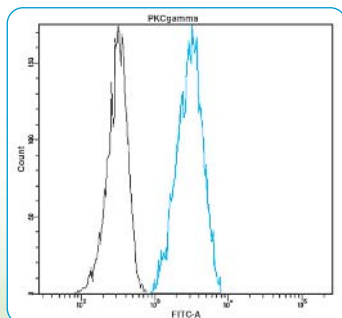
This conventional PKC isoform is expressed normally in peripheral blood lymphocytes. Expression of PKC gamma alternates in T lymphocytes during the progression of various types of cancer.

Product information

Clone: K21-L
Isotype: Rabbit IgG

Reactivity: Human
Expiration: 24 months from the day of delivery

Preparation: The antibody was prepared by in-vitro cloning technology, and the monospecific product was conjugated with FITC under optimal conditions. The solution is free of unconjugated FITC and unconjugated antibody.



Profile of peripheral blood lymphocytes analyzed by the BD FACSCanto II.

Cells were fixed, permeabilized and stained with anti-human PKC- γ FITC (blue, used 10 μ l per test) or with an isotype control (black).

Anti - PKC- δ FITC – rabbit clonal antibody

Cat. #: DB1005 (100 tests)

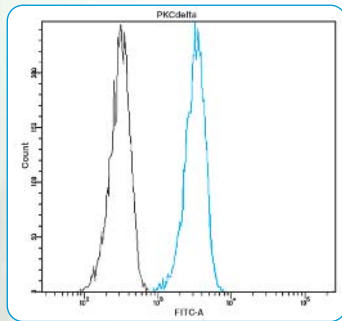
Detected in activated B lymphocytes. Its expression alternates in chronic lymphocytic leukemia cells, where it is associated with tumor suppression and tumor proliferation.

Product information

Clone: R20-F
Isotype: Rabbit IgG

Reactivity: Human
Expiration: 24 months from the day of delivery

Preparation: The antibody was prepared by in-vitro cloning technology, and the monospecific product was conjugated with FITC under optimal conditions. The solution is free of unconjugated FITC and unconjugated antibody.



Profile of peripheral blood lymphocytes analyzed by the BD FACSCanto II.

Cells were fixed, permeabilized and stained with anti-human PKC- δ FITC (blue, used 10 μ l per test) or with an isotype control (black).

Anti - PKC- ϵ FITC – rabbit clonal antibody

Cat. #: DB1006 (100 tests)

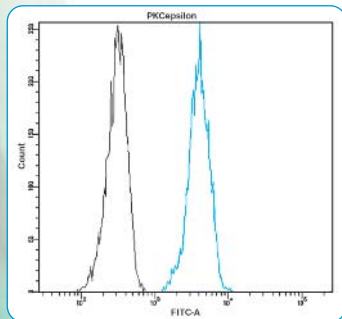
This PKC isoform is highly expressed in T lymphocytes. PKC epsilon controls cell proliferation of CD4 positive T cells. It plays a critical role in B cells in chronic lymphocytic leukemia.

Product information

Clone: I27-K
Isotype: Rabbit IgG

Reactivity: Human
Expiration: 24 months from the day of delivery

Preparation: The antibody was prepared by in-vitro cloning technology, and the monospecific product was conjugated with FITC under optimal conditions. The solution is free of unconjugated FITC and unconjugated antibody.



Profile of peripheral blood lymphocytes analyzed by the BD FACSCanto II.

Cells were fixed, permeabilized and stained with anti-human PKC- ϵ FITC (blue, used 10 μ l per test) or with an isotype control (black).

Anti - PKC- ζ FITC – rabbit clonal antibody

Cat. #: DB1007 (100 tests)

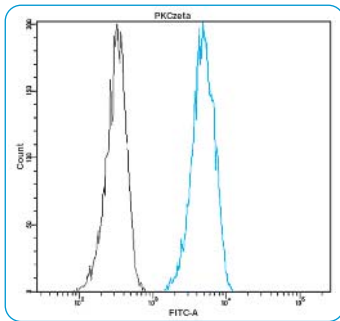
Higher expression of this PKC isoform is detected in immature CD34+ enriched cells and in leukemic pre-B acute lymphocytic leukemia G2 cells.

Product information

Clone: S19-V
Isotype: Rabbit IgG

Reactivity: Human
Expiration: 24 months from the day of delivery

Preparation: The antibody was prepared by in-vitro cloning technology, and the monospecific product was conjugated with FITC under optimal conditions. The solution is free of unconjugated FITC and unconjugated antibody.



Profile of peripheral blood lymphocytes analyzed by the BD FACSCanto II.

Cells were fixed, permeabilized and stained with anti-human PKC- ζ FITC (blue, used 10 μ l per test) or with an isotype control (black).

Anti - BAX FITC – rabbit clonal antibody

Cat. #: DB1010 (100 tests)

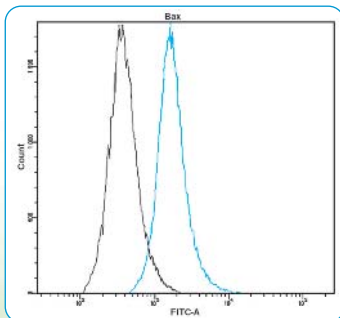
Bax expression, mostly associated with promotion of apoptosis, has been extensively studied in connection with cancer cell responses to chemotherapeutic drugs.

Product information

Clone: T22-A
Isotype: Rabbit IgG

Reactivity: Human
Expiration: 24 months from the day of delivery

Preparation: The antibody was prepared by in-vitro cloning technology, and the monospecific product was conjugated with FITC under optimal conditions. The solution is free of unconjugated FITC and unconjugated antibody.



Profile of human HEK293 cell line analyzed by the BD FACSCanto II.

Cells were fixed, permeabilized and stained with anti-human Bax FITC (blue, used 10 μ l per test) or with an isotype control (black).

Anti - Bcl-2 FITC – rabbit clonal antibody

Cat. #: DB1011 (100 tests)

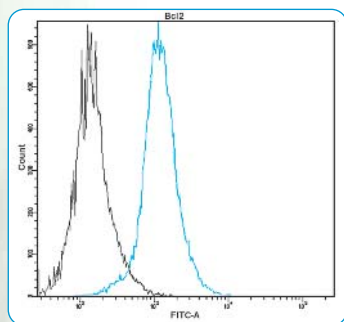
Bcl-2 blocks apoptotic cell death by controlling mitochondrial membrane permeability. The bcl-2 protein has been implicated in myelomas, chronic lymphocytic leukemia and many other types of cancer.

Product information

Clone: P21-P
Isotype: Rabbit IgG

Reactivity: Human
Expiration: 24 months from the day of delivery

Preparation: The antibody was prepared by in-vitro cloning technology, and the monospecific product was conjugated with FITC under optimal conditions. The solution is free of unconjugated FITC and unconjugated antibody.



Profile of human HEK293 cell line analyzed by the BD FACSCanto II.

Cells were fixed, permeabilized and stained with anti-human Bcl-2 FITC (blue, used 10 μ l per test) or with an isotype control (black).

Anti - p53 FITC – rabbit clonal antibody

Cat. #: DB1012 (100 tests)

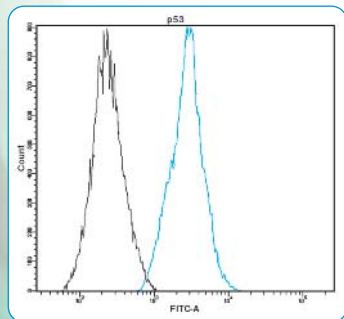
Tumor suppressor molecule. General marker of cell proliferation, where it's enhanced expression is in most cases related to cancer. p53 is frequently detected in chronic lymphocytic leukemia.

Product information

Clone: H21-E
Isotype: Rabbit IgG

Reactivity: Human
Expiration: 24 months from the day of delivery

Preparation: The antibody was prepared by in-vitro cloning technology, and the monospecific product was conjugated with FITC under optimal conditions. The solution is free of unconjugated FITC and unconjugated antibody.



Profile of human IMR32 cell line analyzed by the BD FACSCanto II.

Cells were fixed, permeabilized and stained with anti-human p53 FITC (blue, used 10 μ l per test) or with an isotype control (black).

Anti - Actin FITC – rabbit clonal antibody

Cat. #: DB1013 (100 tests)

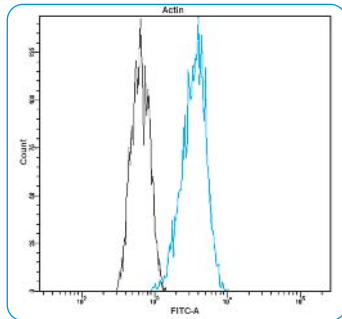
This antibody detects alpha and beta actin in cells. Its abnormal expression was detected in lymphocytes of Alzheimer's disease and Down's syndrome patients. Generally, actin represents one of the major proteins expressed in human lymphocytes.

Product information

Clone: Q20-K
Isotype: Rabbit IgG

Reactivity: Human
Expiration: 24 months from the day of delivery

Preparation: The antibody was prepared by in-vitro cloning technology, and the monospecific product was conjugated with FITC under optimal conditions. The solution is free of unconjugated FITC and unconjugated antibody.



Profile of peripheral blood lymphocytes analyzed by the BD FACSCanto II.

Cells were fixed, permeabilized and stained with anti-human Actin FITC (blue, used 10 μ l per test) or with an isotype control (black).

Anti - Cyclin D1 FITC – rabbit clonal antibody

Cat. #: DB1014 (100 tests)

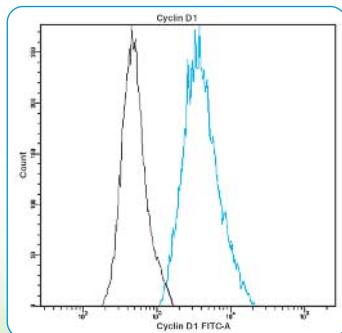
Cyclin D1 is a putative proto-oncogene overexpressed in a wide variety of human neoplasms.

Product information

Clone: E20-D
Isotype: Rabbit IgG

Reactivity: Human
Expiration: 24 months from the day of delivery

Preparation: The antibody was prepared by in-vitro cloning technology, and the monospecific product was conjugated with FITC under optimal conditions. The solution is free of unconjugated FITC and unconjugated antibody.



Profile of human HEK293 cell line analyzed by the BD FACSCanto II.

Cells were fixed, permeabilized and stained with anti-human Cyclin D1 FITC (blue, used 10 μ l per test) or with an isotype control (black).

Anti - Estrogen Receptor FITC – rabbit clonal antibody

Cat. #: DB1015 (100 tests)

Lymphocytes express nuclear as well as membrane estrogen receptors. Alteration in estrogen receptor expression was observed in various types of leukemia and other types of cancer.

Product information

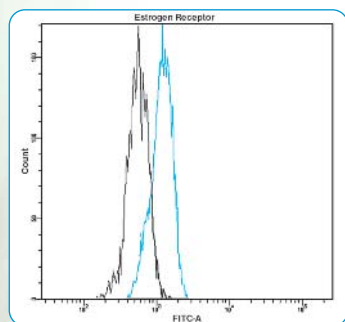
Clone: H17-A

Reactivity: Human

Isotype: Rabbit IgG

Expiration: 24 months from the day of delivery

Preparation: The antibody was prepared by in-vitro cloning technology, and the monospecific product was conjugated with FITC under optimal conditions. The solution is free of unconjugated FITC and unconjugated antibody.



Profile of peripheral blood lymphocytes analyzed by the BD FACSCanto II.

Cells were fixed, permeabilized and stained with anti-human ER FITC (blue, used 10 μ l per test) or with an isotype control (black).

Anti - CD5 FITC – rabbit clonal antibody

Cat. #: DB1017 (100 tests)

Transmembrane protein marker of lymphomas expressed on B and T cells. CD5 is a phenotypic marker of B cell lymphoproliferative diseases. CD5 positive B cell population is present in several autoimmune disorders, including diabetes mellitus (insulin-dependent), rheumatoid arthritis, or Sjögren syndrome. Expression of CD5 regulates the responsiveness of human T cell to interleukin-1. B cell lymphomas are relevant for CD5 antigen detection in related malignancies.

Product information

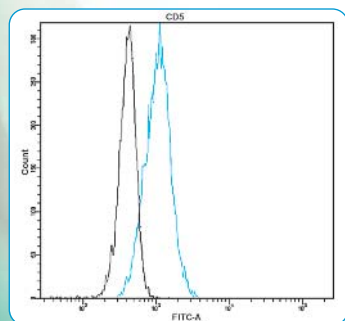
Clone: H22-E

Reactivity: Human

Isotype: Rabbit IgG

Expiration: 24 months from the day of delivery

Preparation: The antibody was prepared by in-vitro cloning technology, and the monospecific product was conjugated with FITC under optimal conditions. The solution is free of unconjugated FITC and unconjugated antibody.



Profile of peripheral blood lymphocytes analyzed by the BD FACSCanto II.

Cells were fixed, permeabilized and stained with anti-human CD5 FITC (blue, used 10 μ l per test) or with an isotype control (black).

Anti - CD10 FITC – rabbit clonal antibody

Cat. #: DB1018 (100 tests)

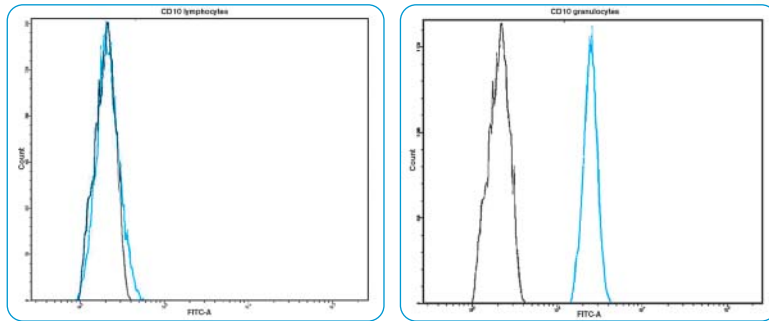
Common acute lymphoblastic leukemia antigen is a useful marker for the characterization of childhood leukemia and B-cell lymphomas.

Product information

Clone: K16-P
Isotype: Rabbit IgG

Reactivity: Human
Expiration: 24 months from the day of delivery

Preparation: The antibody was prepared by in-vitro cloning technology, and the monospecific product was conjugated with FITC under optimal conditions. The solution is free of unconjugated FITC and unconjugated antibody.



Profile of peripheral blood lymphocytes analyzed by the BD FACSCanto II.

Cells were fixed, permeabilized and stained with anti-human CD10 FITC (blue, used 10 μ l per test) or with an isotype control (black).

Anti - FITC Rabbit IgG – isotype control

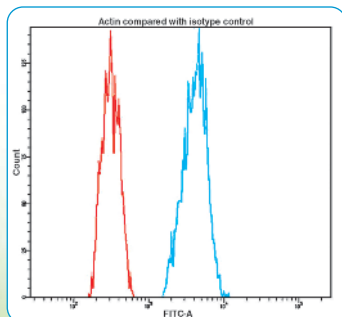
Cat. #: DB1000 (100 tests)

Product information

Isotype: Rabbit IgG

Reactivity: Human
Expiration: 24 months from the day of delivery

Preparation: The purified antibody is not directed against any known antigen. It was isolated from native rabbit sera and purified by affinity chromatography. The antibody was conjugated with FITC under optimal conditions. The solution is free of unconjugated FITC.



Profile of peripheral blood lymphocytes analyzed by the BD FACSCanto II.

Flow cytometric analysis of human lymphocytes, using Actin-FITC (blue; 10 μ l per test) compared to Rabbit IgG-FITC isotype control (red).

Our special thanks go to:

Katarína Poliaková, MD and Ľubomír Straka, MD, Ph. D.
Clinical Pathology Prešov, Ltd., Prešov, Slovak Republic.

Marián Švajdler, MD and Dr. Lucia Fröhlichová
Louis Pasteur University Hospital Department of Pathology, Košice, Slovak Republic.

Dr. J. Szilasiova
Department of Neurology, LF UPJS, Kosice, Slovak Republic.

Prof. Dr. Med. Lukáš Plank, Ph. D.
Department of Pathology and National Consultation Center for Haematopathology
of Comenius University, Jessenius
Medical Faculty and Faculty Hospital Martin, Slovak Republic.

Dr. Martina Takáčová
Institute of Virology, Slovak Academy of Sciences, Bratislava, Slovak Republic.

Dr. Valeriy Ostapchenko and Dr. Marco Prado
Robarts Research Institute, the University of Western Ontario,
London, Ontario, Canada.



DB Biotech

Popradská 80, 040 11 Košice, Slovak Republic

tel.: +421 55 789 00 10, fax: +421 55 789 00 24, dbbiotech@dbbiotech.com

www.dbbiotech.com